



# Generation 6 Enterprise Brief

Overview of the key new features of Gen 6 for Nx EVOS, Nx Go, and Nx Witness VMS

- Introduction.....2
- Enterprise Roadmap.....2
- New Organizational Layer.....3
- Nx Connect.....4
- Nx AI Manager.....5
- Nx Maps.....6
- Priority Support.....7
- Improved and Redesigned User Management.....7
- Temporary Users.....8
- Camera Hotspots.....10
- Enhanced Lightweight Directory Access Protocol (LDAP) Integration.....11
- NVIDIA Hardware Video Decoding Acceleration.....12
- Bookmarks in Nx Cloud.....12
- Object Search in Nx Mobile.....12
- Increased Maximum Devices.....12
- ISO 27001 Compliant.....12
- Gen 6 Improvements.....13

## Introduction

Introducing Gen 6, the latest evolution in the Nx software lineup. This release marks a significant leap forward for Network Optix, delivering unmatched scalability and efficiency in video and data management. Gen 6 introduces a suite of new features designed for administrators and operators, along with exclusive capabilities tailored specifically for large-scale operations.

With the launch of Generation 6, Nx products have evolved into two distinct categories, Gen 6 Enterprise and Gen 6 Pro. Gen 6 Enterprise introduces an infinitely scalable video and data operating system, customizable to meet any application needs. This includes our in-house offerings such as Nx Witness Enterprise, designed for security, and Nx Go, designed for mobility and transportation. These enterprise-focused solutions are now available on a flexible monthly service subscription, providing greater adaptability for varying operational demands.

In addition to these new offerings, we continue to support the robust and widely respected Nx Witness Pro. It remains available under traditional perpetual licensing, now updated with the latest features of Gen 6 Pro, ensuring that long-time users can enjoy the advancements within the desktop and mobile applications without altering their existing licensing model.

## Enterprise Roadmap

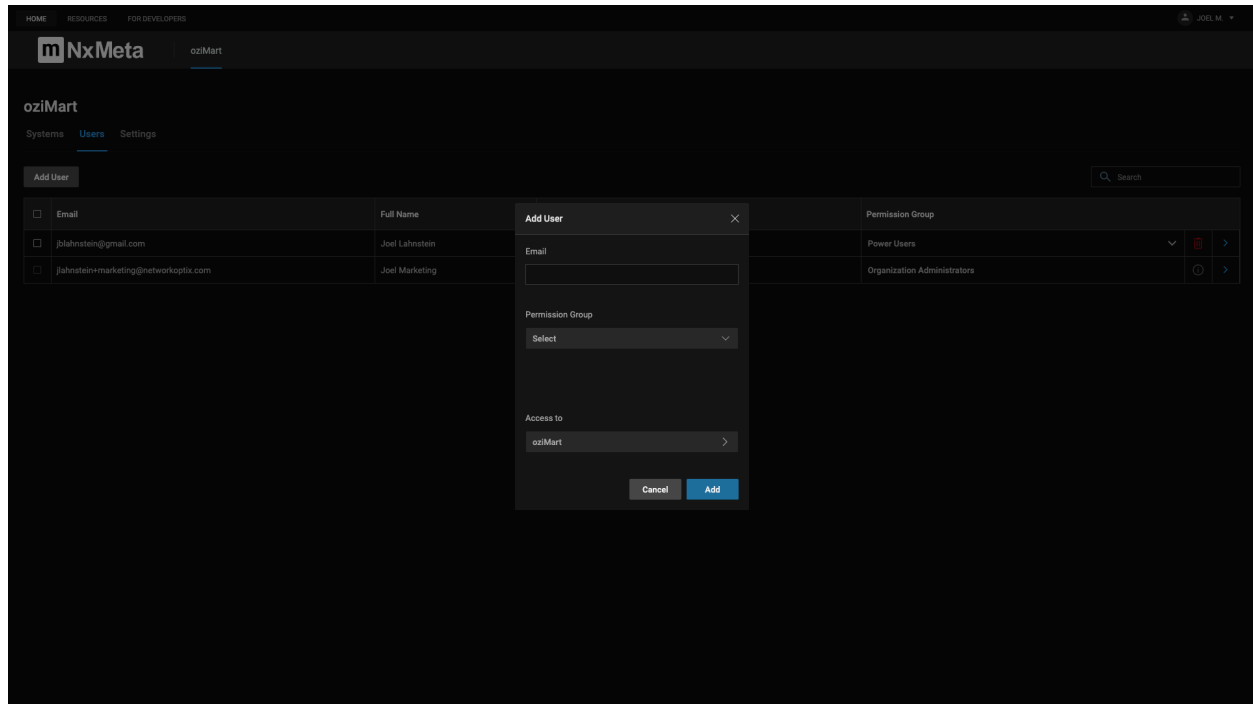
As Gen 6 evolves, the focus will shift toward enhancing enterprise cloud capabilities and cloud-to-edge AI features. This expansion aims to meet the growing demand from global organizations transitioning their infrastructure to the cloud, aligning with current market trends.

- Currency support for Nx Connect
- Pre-billing support for Nx Connect
- Organizations support for Nx Maps
- Other device support (I/O, alarm, etc) for Nx Maps
- Soft trigger support for Nx Maps
- Advanced Cloud layout
- Shareable Links
- Cloud Storage
- Single Sign On
- AI Model Deployment/running
- Barcode Provisioning

# What's New in Generation 6

## New Organizational Layer

Available On: Nx EVOS, Nx Go, Nx Witness Enterprise

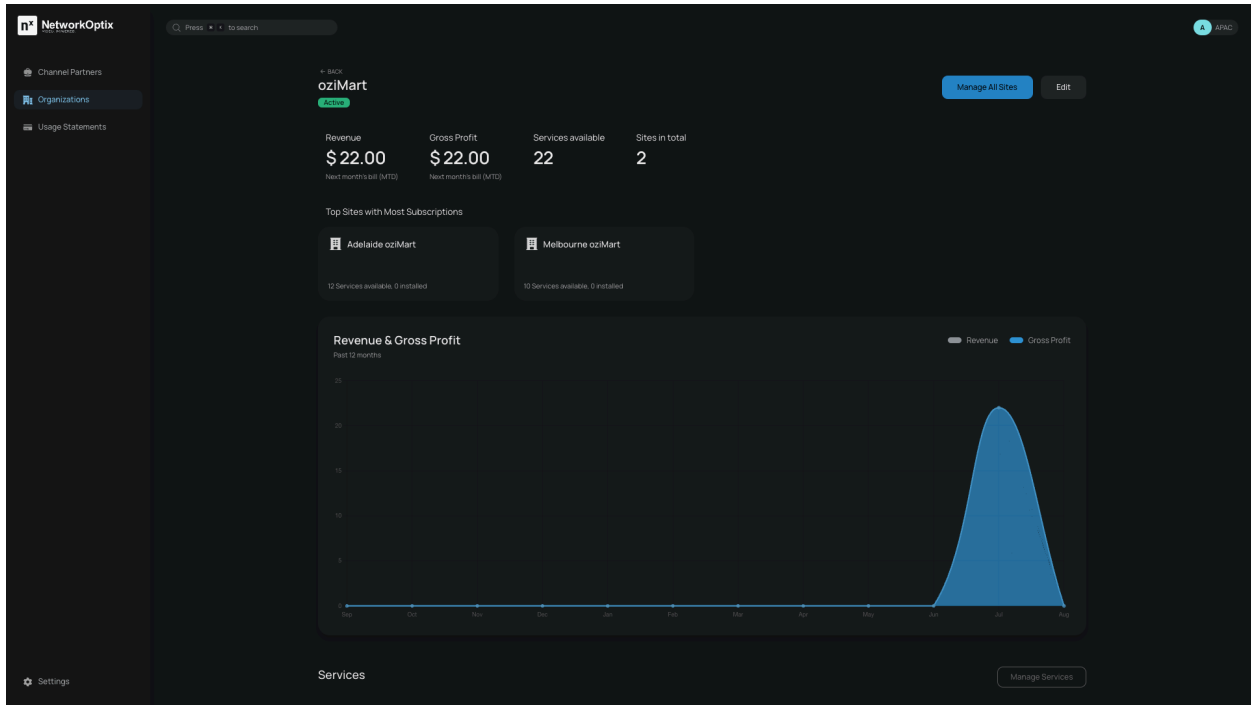


Gen 6 Enterprise introduces an entirely new hierarchical structure that enables reliable, infinite scalability of systems. This new Organizational Layer streamlines the organization and control of systems, Sites, and user permissions, providing comprehensive management for even the most complex deployments.

- **Unified Site Organization:** Allows for infinitely scalable systems by enabling the management of systems at the organization level. This Organizational Layer connects multiple Sites, formerly known as Hives, under a single Organization.
- **Unified Notifications:** Stay informed with centralized notifications from all Sites linked to your system's cloud account, accessible directly in the desktop client.
- **Unified User Management:** Manage users across multiple Sites and Servers.

# Nx Connect

Available On: Nx EVOS, Nx Go, Nx Witness Enterprise



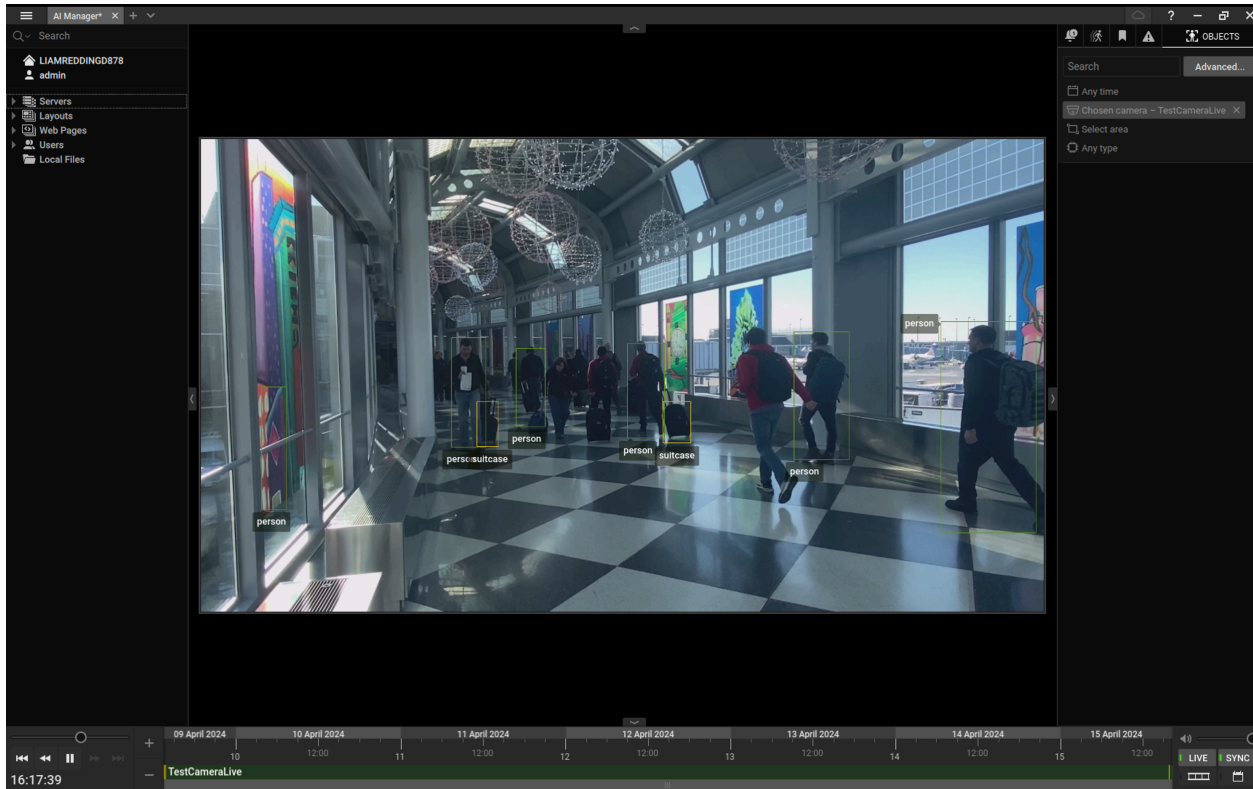
The Nx Connect subscription management portal provides an intuitive system for Channel Partners to manage their sub-Channel Partners and Organizations. It serves as the foundation management portal and will grow to allow support for third-party integrations.

## Features:

- Create, edit, and oversee Channel Partners and Organizations across multiple channels
- Customize and manage service price, status, and credit limits
- Visualize sales data
- Find out more in our [Nx Connect Training](#)

## Nx AI Manager

Available On: Nx EVOS



The newest addition to the Nx Toolkit, Nx AI Manager is a universal model pipeline that optimizes any AI model to run on any accelerator with customizable pre- and post-processing configurations. It allows developers to easily configure and control their AI setups, ensuring optimal performance across their fleet of edge devices. With Nx AI Manager, developers can effortlessly enhance any video application with intelligence by simply uploading an AI model - no extra engineering required.

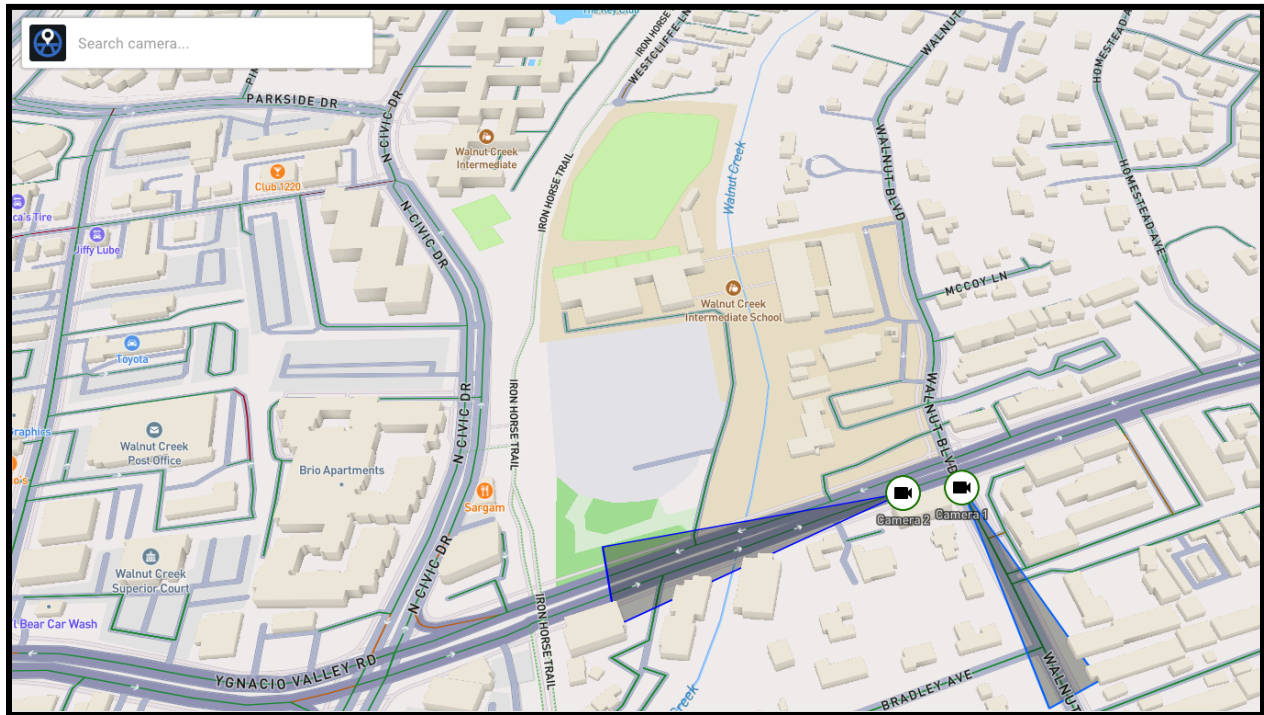
Learn more [here](#).

Features:

- Deploy and scale AI models across any accelerator or combination of accelerators
- Customize pre- and post-processing configurations
- Manage and update AI models across your fleet of devices

## Nx Maps

Available On: Nx EVOS, Nx Go, Nx Witness Enterprise



Nx Maps is an advanced 2D/3D mapping solution designed for seamless IP device monitoring and management. It offers operators a user-friendly, easy-to-set-up visual dashboard, providing quick access to all devices and enhancing situational awareness.

### Features:

- Satellite / 3D / 2D
- Image/PDF
- Customizable Maps
- Device Auto Discovery
- Connect with Nx Cloud
- Traffic Monitoring
- Open Device from Nx Maps
- Server API

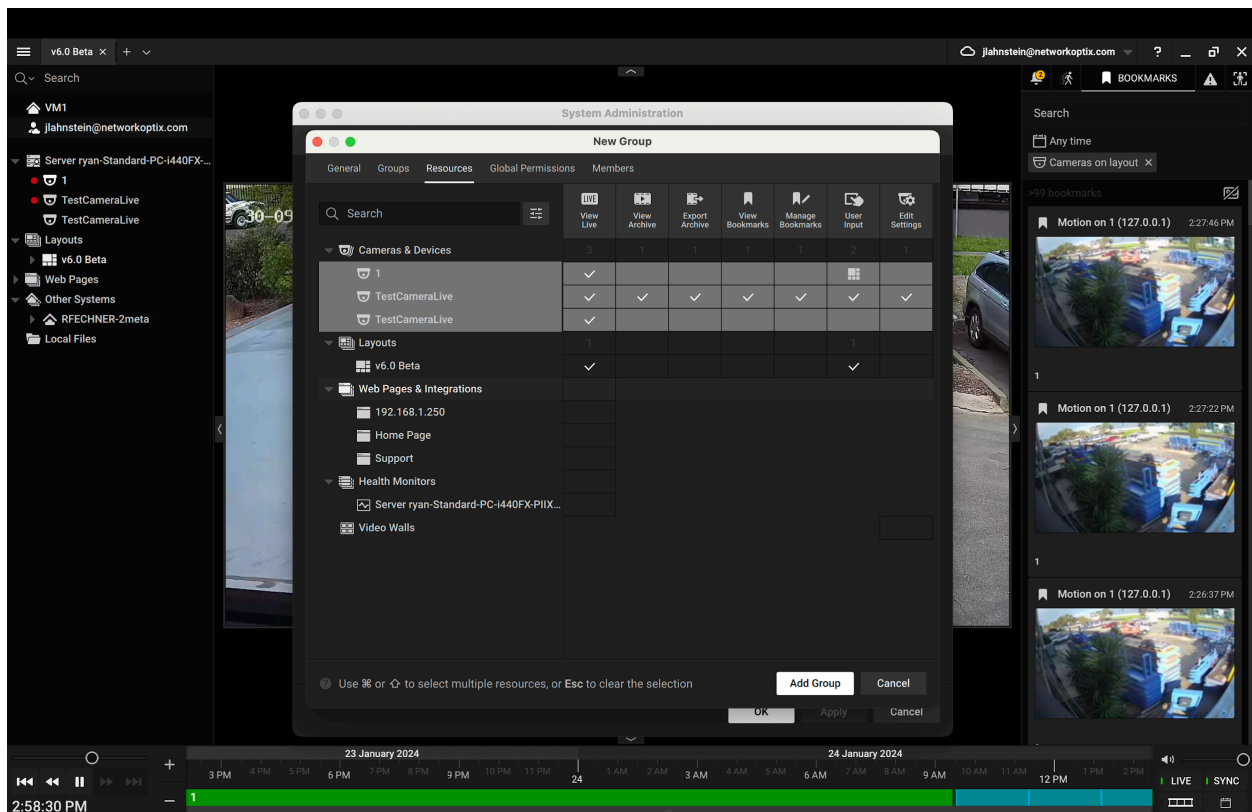
## Priority Support

Available On: Nx EVOS, Nx Go, Nx Witness Enterprise

With a new product comes a new set of challenges, we know this and we're here to help. Enterprise users will receive priority attention on their support tickets until the built-in support chat is made available for Enterprise users.

## Additional Features in Gen 6

### Improved and Redesigned User Management



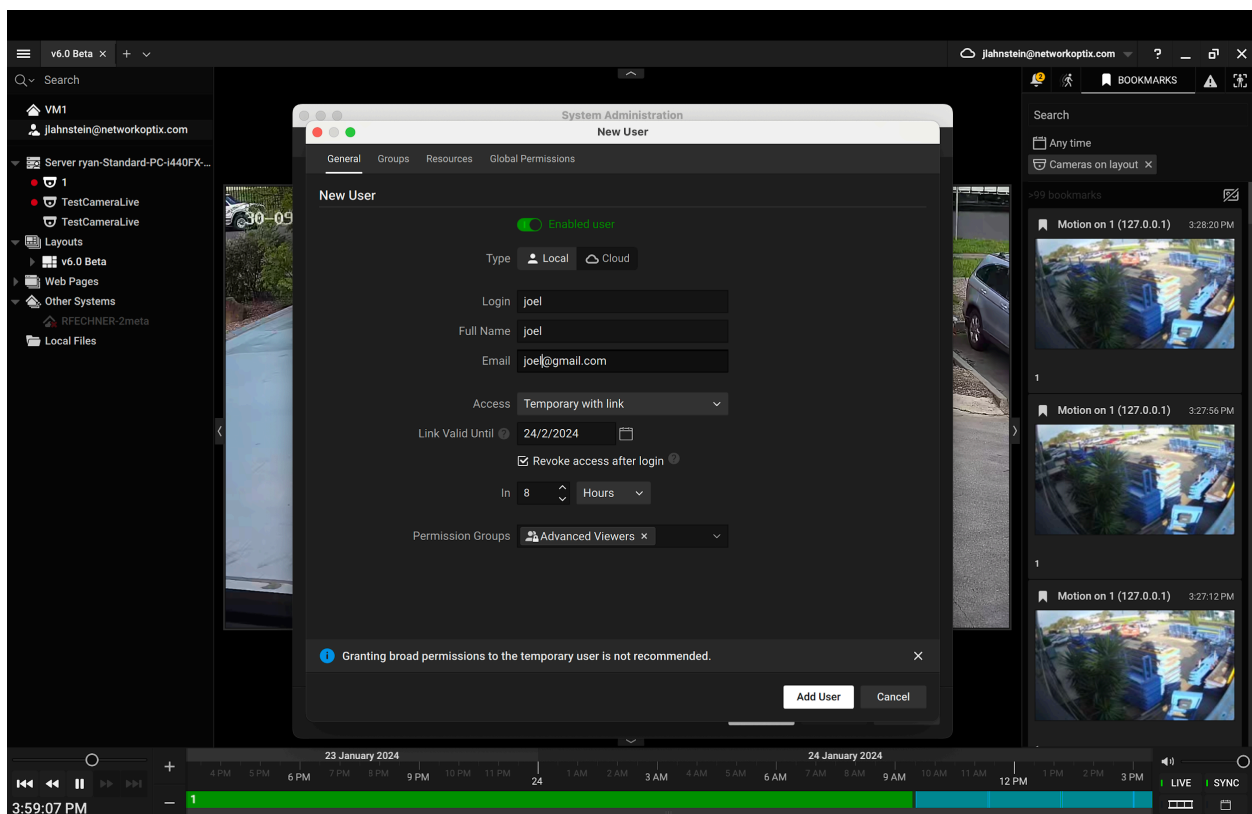
Revamped and reimagined user management in your Nx system. With the introduction of Gen 6, administrators now have the power to craft permissions for both groups and individual users. This release also introduces the capability for users to belong to multiple groups, providing unparalleled control over user management.

What's Changed:

- Owners are renamed to Administrators

- Administrators are renamed to Power Users
- Users can now be a part of a group or multiple groups and/or have custom permissions
- Added Groups and Nested Groups
  - Groups can also be members of another group
  - Groups can inherit permissions from other groups
- Users and groups can be given different permissions for different cameras/resources
- Users removed from resource tree
- Improved UI design

## Temporary Users



Now, alongside your regular users, you can create temporary users for time-limited access. Admins have full control, setting expiration times and link usage restrictions. Please note, this feature must be set up in the local users tab.

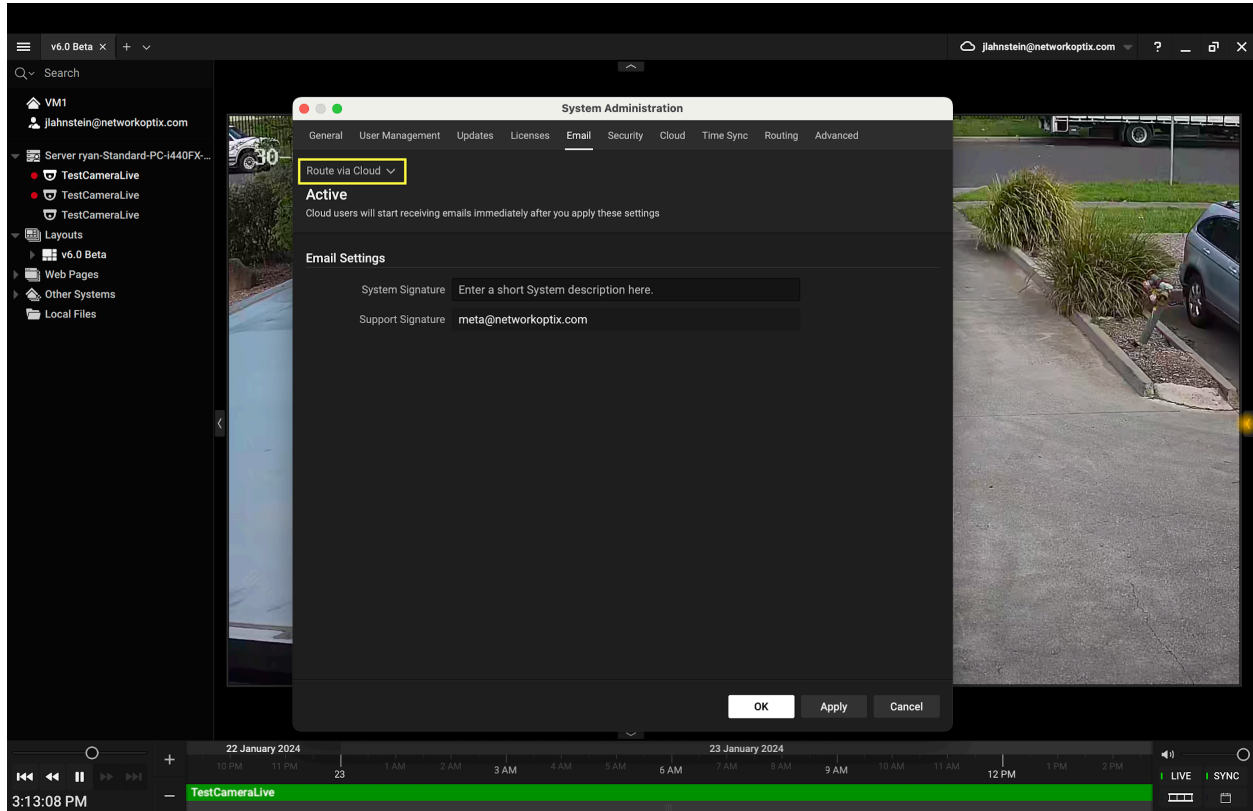
How to set up:

1. Navigate to **User Management** and click **Add User**
2. Select **Type** as **Local**
3. Choose access method - **Temporary with Link**
4. Fill in all necessary fields
5. Select **Permission Groups**
6. Click **Add User**



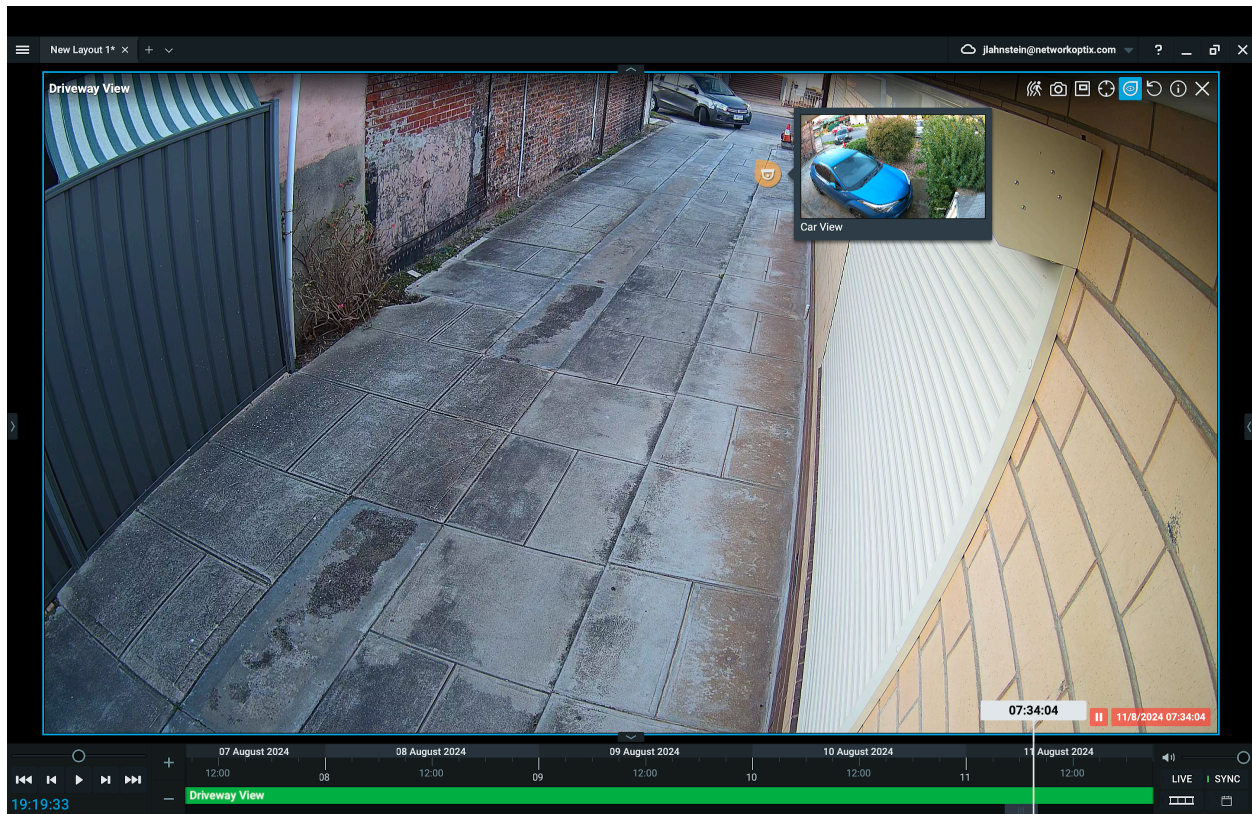
*Administrators and Power Users can modify these temporary users at any time through the user management menu*

## Emails via Nx Cloud



A newly added option in the email settings lets users choose to route emails through the Nx Cloud, offering an additional choice alongside the existing option to route via SMTP. If this option is selected, when the media server needs to send an email, it will send API requests to the notifications service instead of using SMTP settings.

## Camera Hotspots



Expand your vision with the ability to layer interactive icons over live video feeds. With Hotspots, you can quickly view a new location without the need to open a new or search for a specific camera. Simply add a hotspot icon in the settings and link it to the relevant camera that you desire.

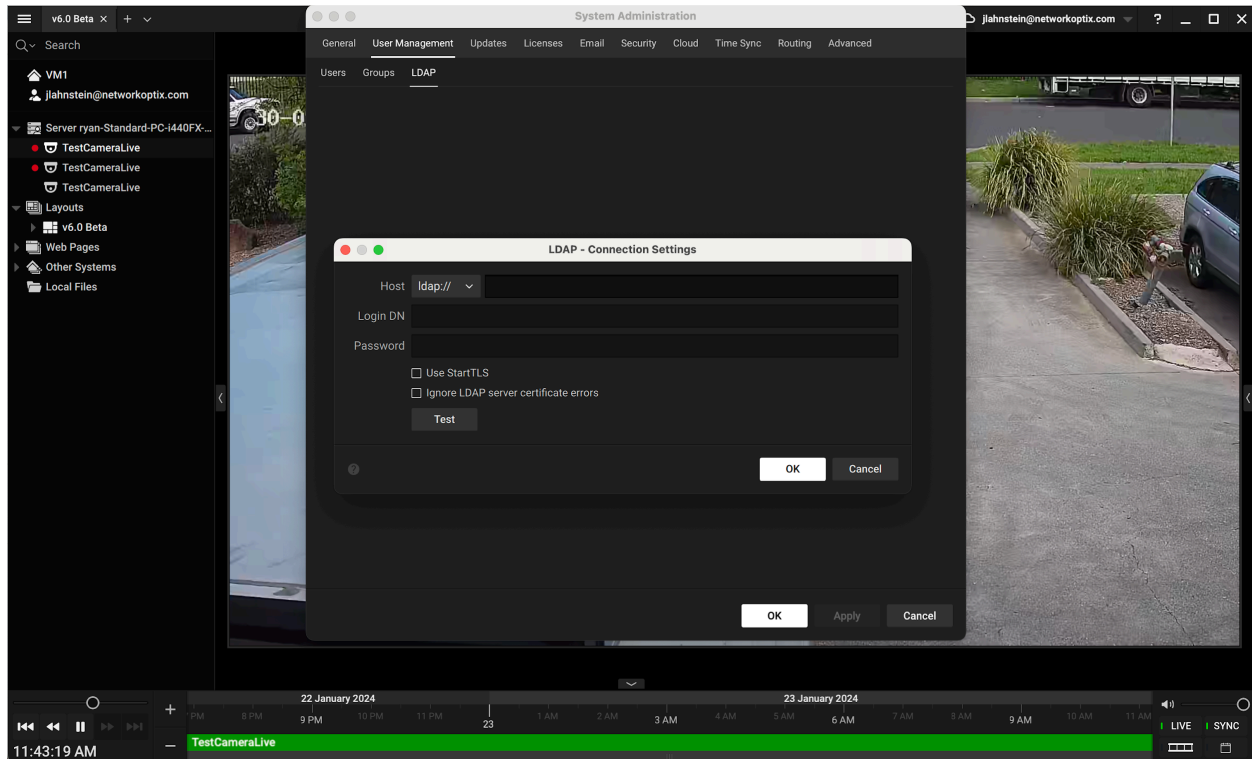
How to set up:

1. Open Camera Settings and go the Hotspot tab
2. Switch hotspots to the On (Green) position and then click Add
3. Once the hotspot is visible click and drag into position
4. Add a Direction to the icon if necessary
5. Select the Target and choose the Camera you would like the hotspot to view
6. Apply changes

The hotspot can then be viewed by clicking the icon in the camera tools overlay, to the right of the zoom window tool. When viewing, users can hover to see a live thumbnail or click to open it in the layout.

## Enhanced Lightweight Directory Access Protocol (LDAP) Integration

Streamline user access management with an enhanced LDAP integration, eliminating the need for manual updates. Easily manage permissions for all company services in one place, ensuring quick and efficient onboarding of new employees.



How LDAP Groups work:

Configure LDAP Integration:

- Admin sets up LDAP integration with specified filters.

User and Group Import:

- Fetch all users and groups from LDAP based on admin-set filters.

Automatic Group Assignment:

- Assign LDAP groups to users in VMS based on their LDAP membership.

Import Group Relationships:

- Import group relationships, allowing groups to be members of other groups.

Continuous Synchronization:

- Maintain continuous synchronization of users and groups between LDAP and VMS.
- Updates in LDAP reflect shortly in the VMS.

## **NVIDIA Hardware Video Decoding Acceleration**

Leverage the advanced capabilities of NVIDIA GPUs to provide video decoding, ensuring your security system operates at peak efficiency.

## **Bookmarks in Nx Cloud**

Bookmarks offer a reliable, straightforward, and user-friendly method to capture key data and insights from your video system. With Generation 6 Pro, you can now access these bookmarks directly through Nx Cloud. Coming Soon.

## **Object Search in Nx Mobile**

Nx Mobile now enables advanced object searches directly within the app. Along with this new feature, users can still enjoy the powerful capabilities of live viewing, playback, calendar search, smart motion search, and bookmarks.

## **Increased Maximum Devices**

Gen 6 increases the maximum devices per server from 128 cameras to 256 cameras.

## **ISO 27001 Compliant**

Network Optix is proud to be ISO 27001 compliant, meeting the highest international standards for information security. This certification highlights our dedication to safeguarding your data.

**[Join the Gen 6 Enterprise waitlist today!](#)**

## Gen 6 Improvements

- Streamlined Calendar Navigation: Our new calendar offers smoother, more efficient browsing through extensive archives and timeframes.
- Enhanced WebRTC Performance: Significant improvements have been made to WebRTC, with detailed updates available in the upcoming API release notes.
- Improved DST Support: Daylight Saving Time (DST) handling has been optimized for better accuracy.
- JWT Token Support: Resolving Cloud DB performance issues and reducing logout incidents.
- Simplified Menu: Webpages and Integrations are now clearly separated.
- Advanced Log Management: Desktop Client now features enhanced log configuration and extraction capabilities.
- User Session Tracking: New user sessions are now recorded in the Audit Trail for better monitoring.
- Updated In-Client Browser: The In-Client Browser has been upgraded for a smoother browsing experience.
- Quick User Selection: Double-click to quickly select the current user or system in the resource tree.
- Quick Playback Actions: Quick action buttons were added to rewind or fast forward videos by 10 seconds.
- Enhanced Camera Dragging: Fisheye and PTZ cameras can now be easily dragged by their title and header.
- Faster Analytics Display: Analytic markers (yellow) now appear on the timeline much quicker.
- Redesigned Pause Overlay: The pause overlay has been redesigned to allow you to view video content even when paused.
- Customizable Web Page Titles: Web page titles can now be hidden within the Desktop Client for a cleaner interface.
- Resilient Cloud Layouts: Cloud Shared Layouts are now more reliable, even during network congestion or timeouts.
- Updated PTZ Control Guide: The PTZ Control Guide in the Desktop Client now includes new functionalities, usage examples, and operational details.

### New Supported Operating Systems:

- MacOS 14.0.
- Raspberry Pi OS 11 (32-bit).
- Raspberry Pi OS 12 on Raspberry Pi 3 and Raspberry Pi4 (32-bit) without support for native Raspberry cameras.

### Device Changes:

- Vivotek - Added support for new event types: Smart Tracking, Parking Detection, Restricted Zone Detection.
- Vivotek - Advanced Smart Tracking now includes zoom variables in Region of Interest settings.
- Vivotek - Exclusion Mask function added to Advanced Smart Tracking in the Desktop Client.
- Improved Hanwha Intercom Integration
- Faster Hikvision camera authorization on specific Hikvision cameras.
- Now compatible with Allnet cameras.
- Uniview Analytics Enabled