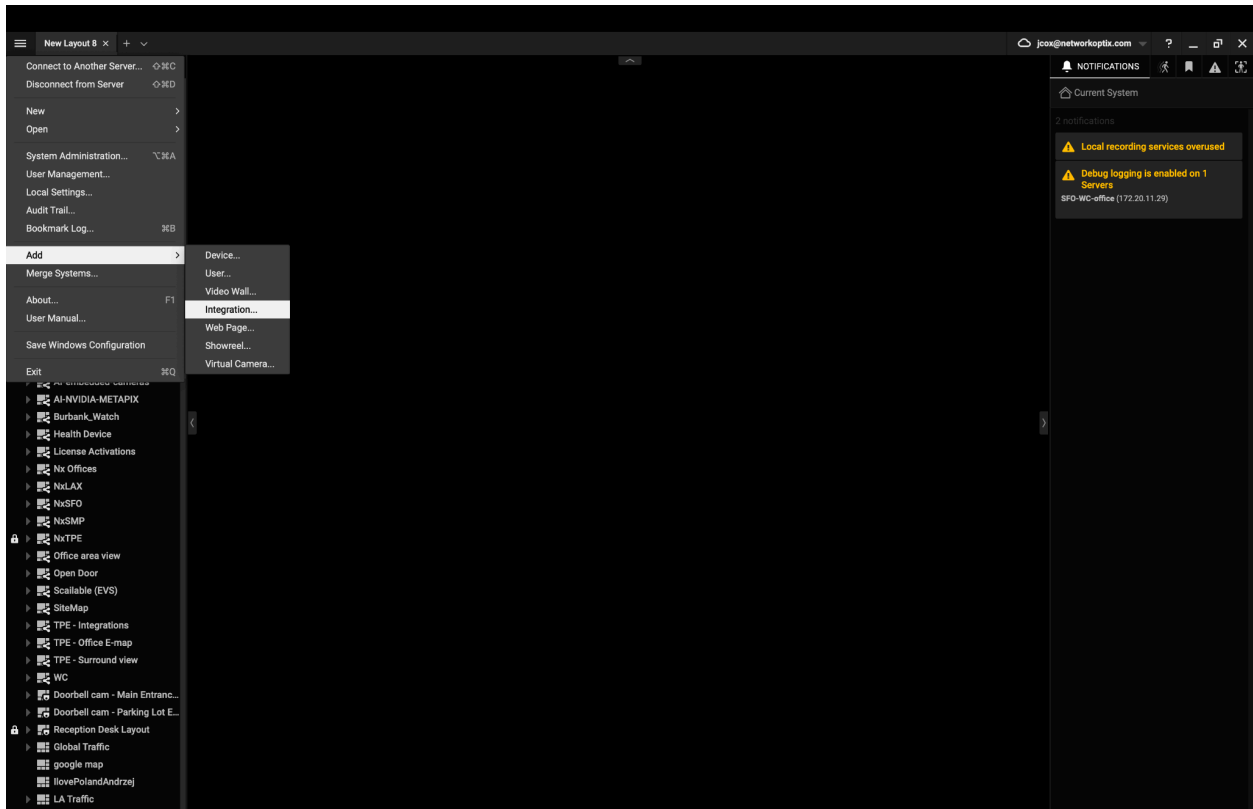




Network Optix
975 Ygnacio Valley Rd.
Walnut Creek, CA 94596
NetworkOptix.com

Installing Nx Maps (Quick Guide)

Step 1 - Add An Integration (Nx Desktop Client)



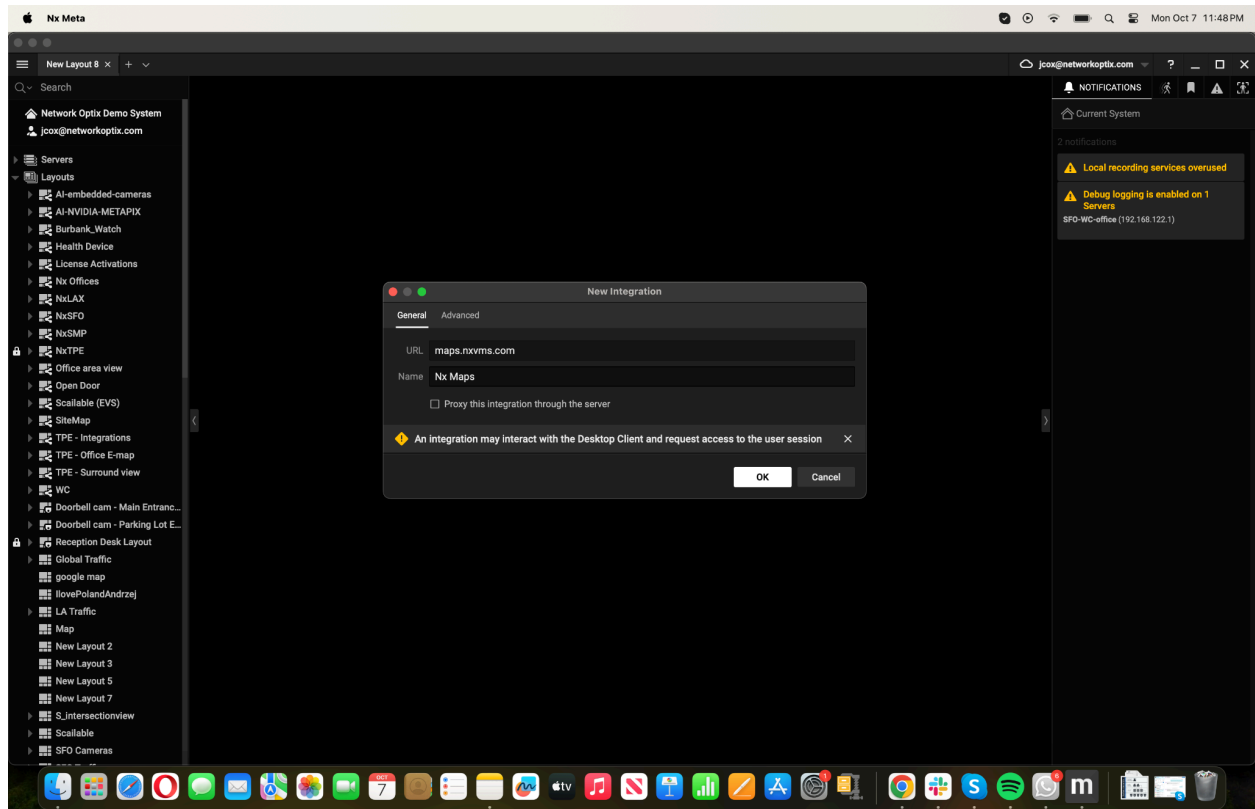
1. Click the burger menu in the upper left corner.
2. Select Add from the main menu
3. Click Integration... from the submenu



Network Optix

975 Ygnacio Valley Rd.
Walnut Creek, CA 94596
NetworkOptix.com

Step 2 - Enter The Integration Details



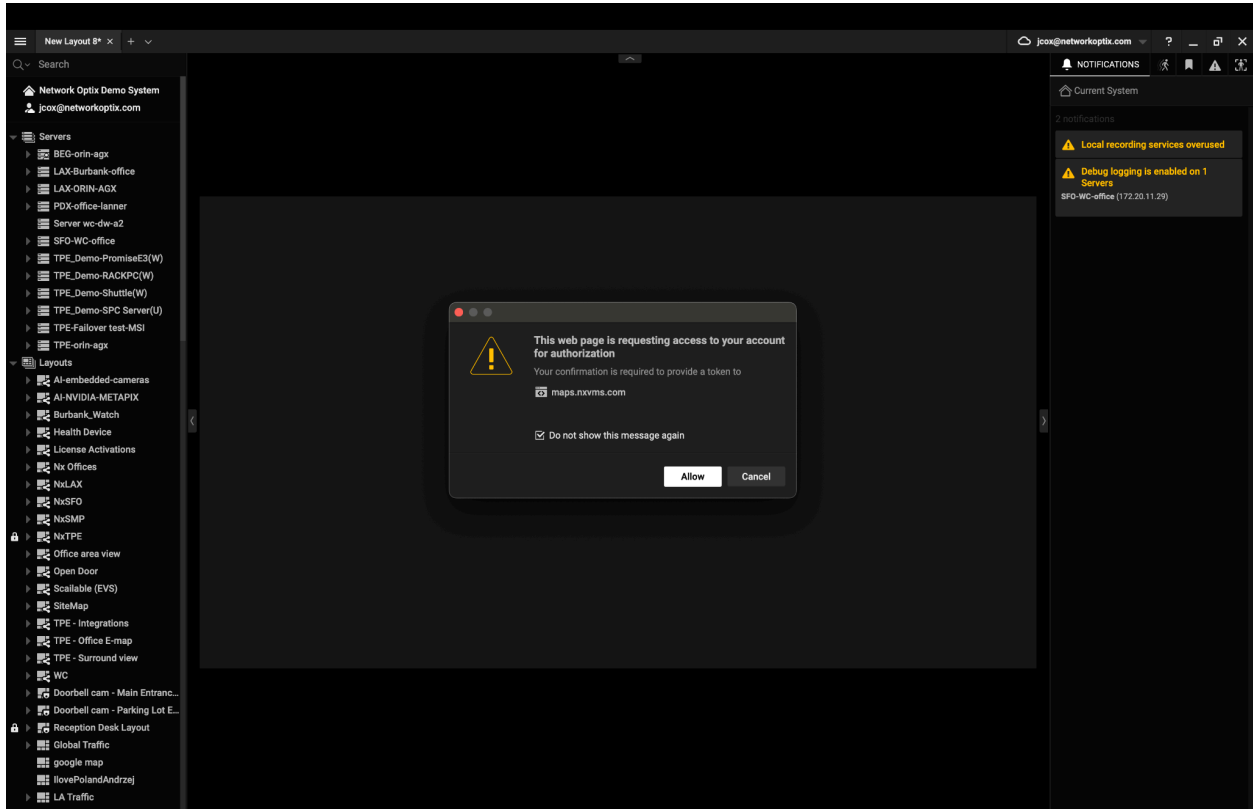
1. Enter the Nx Maps URL in the URL text field (maps.nxvms.com)
2. Enter the name for the integration, for example: Nx Maps
3. Click OK



Network Optix

975 Ygnacio Valley Rd.
Walnut Creek, CA 94596
NetworkOptix.com

Step 3 - Allow Authentication

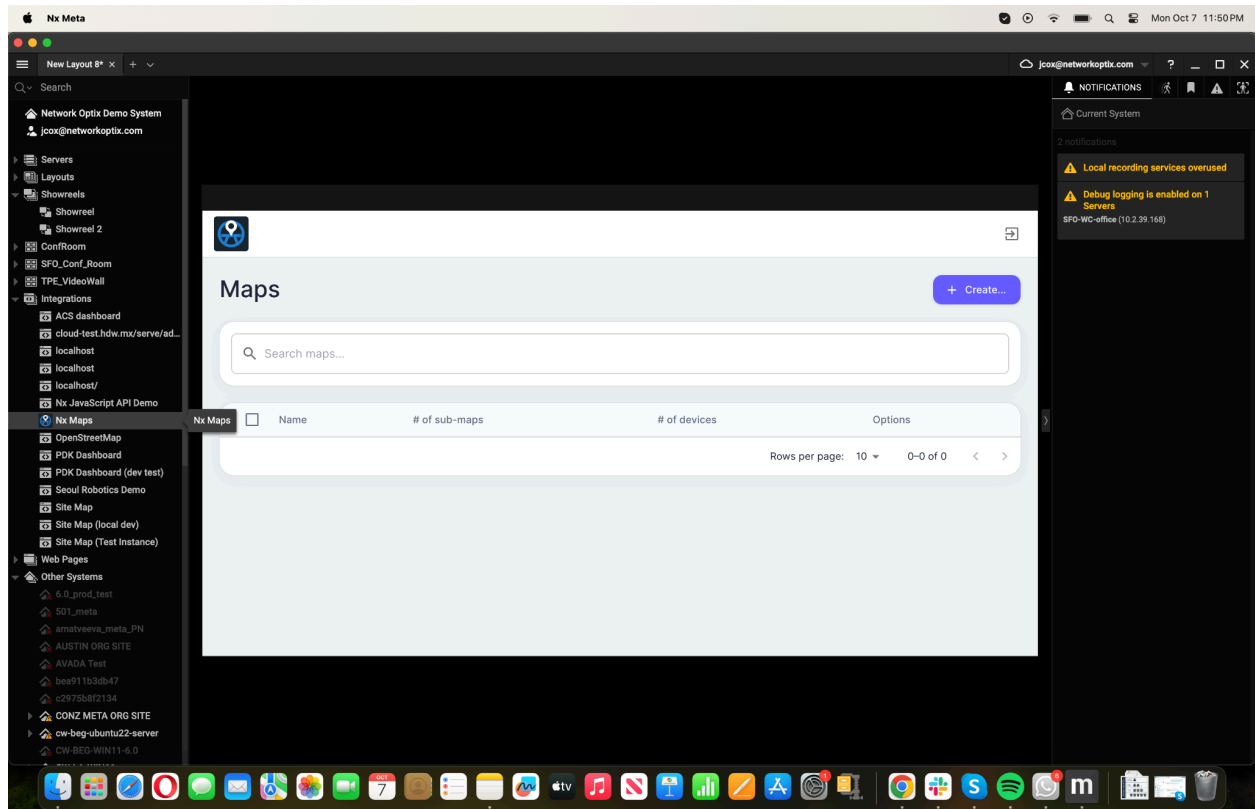


1. Check the "Do not show the message again" checkbox
2. Click Allow



Network Optix
975 Ygnacio Valley Rd.
Walnut Creek, CA 94596
NetworkOptix.com

Step 4 - Open Nx Maps



1. Expand the Integrations resource in the resources menu
2. Double-click, or drag and drop Nx Maps (or your chosen integration name) integration from the resources panel.
3. You can now start creating maps with Nx Maps

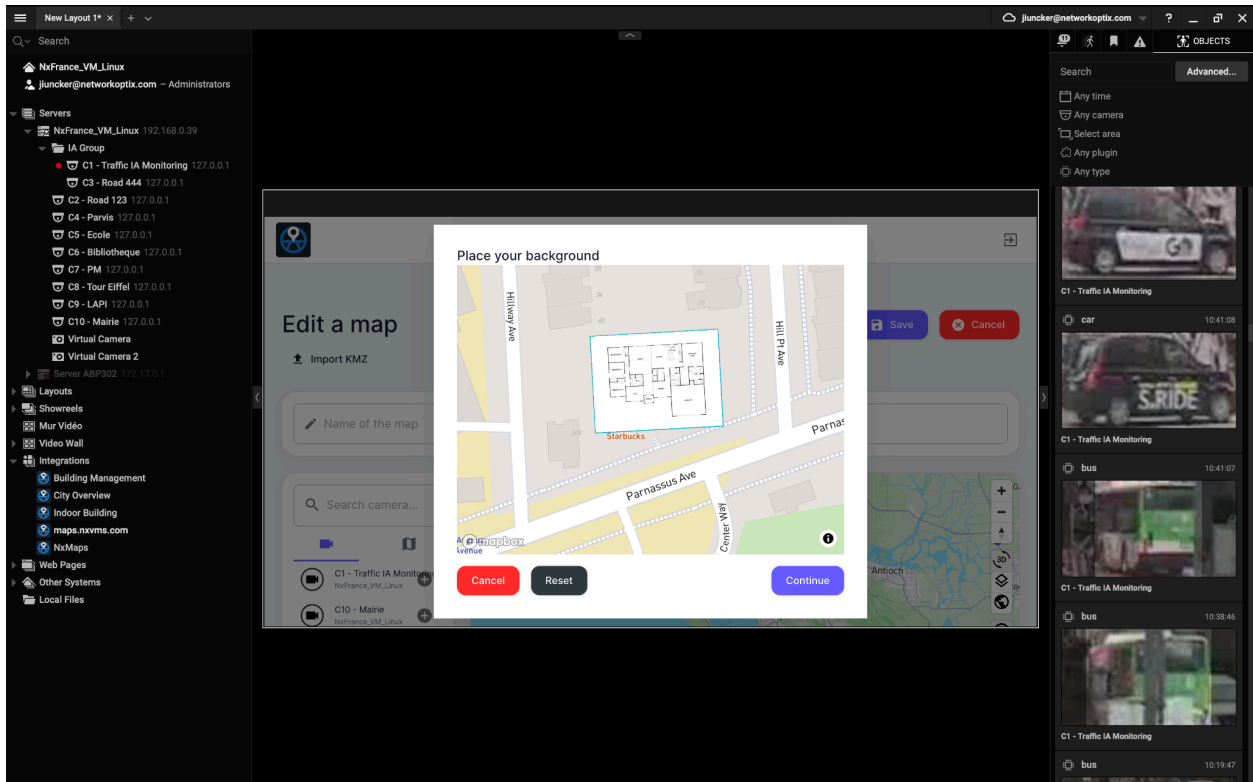


Network Optix

975 Ygnacio Valley Rd.
Walnut Creek, CA 94596
NetworkOptix.com

Create a Map from PDF/Image

Step 1 - Place your Background



1. Click on Create
2. Select from PDF or from Image
3. Click on the 4 corners of your building to define the area
4. Click on "Continue" to save and start placing your device

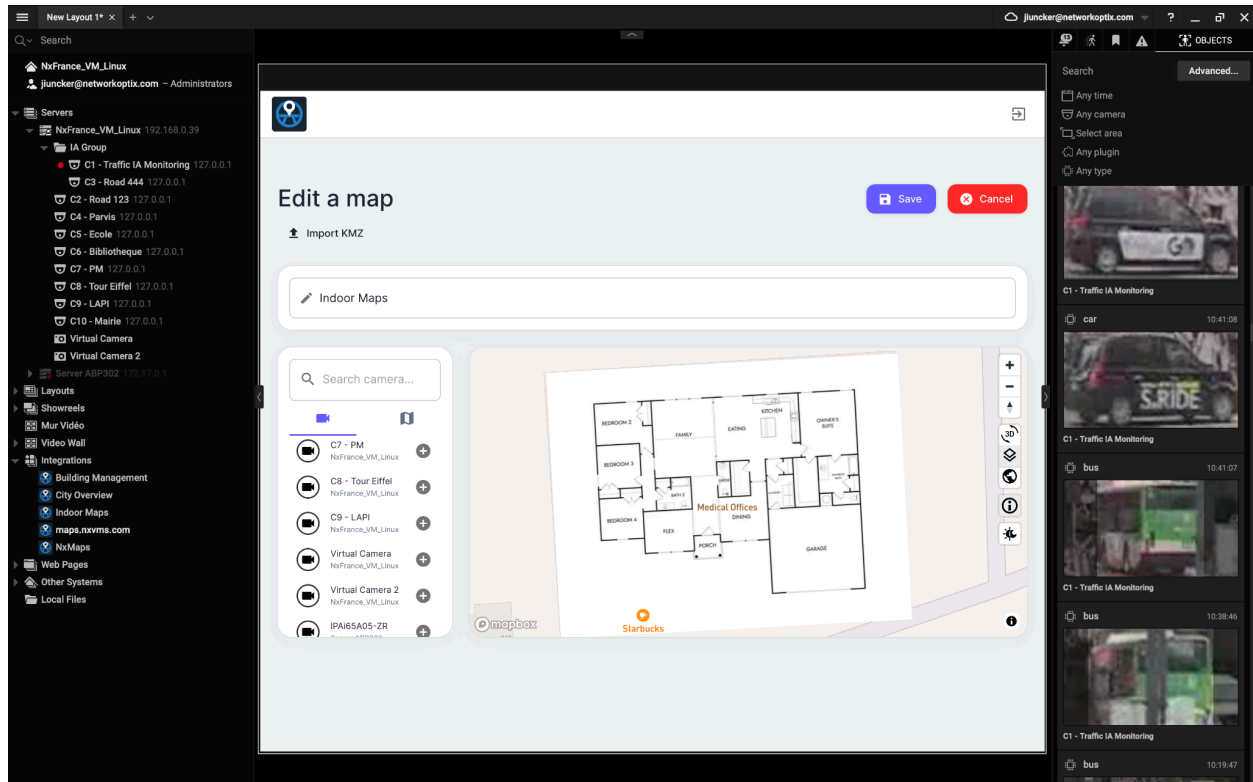
**** Backgrounds are only available in 2D/Satellite mode. They will not be visible in 3D mode.**



Network Optix

975 Ygnacio Valley Rd.
Walnut Creek, CA 94596
NetworkOptix.com

Step 2 - Assign cameras to your map

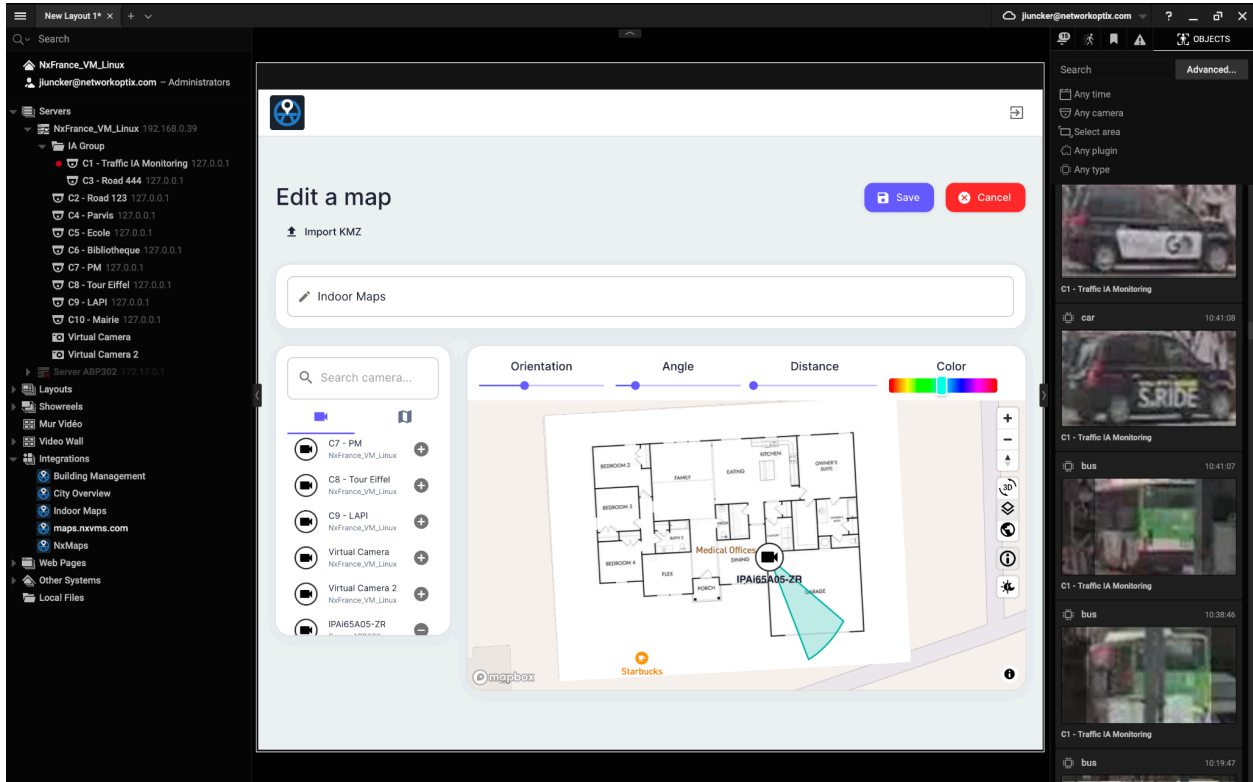


1. Click on the + to activate a camera
2. Move camera to desired location
3. Set the camera field of view



Network Optix
975 Ygnacio Valley Rd.
Walnut Creek, CA 94596
NetworkOptix.com

Step 3 - Set FoV & Color



1. Define camera orientation
2. Define camera viewing angle
3. Define camera viewing distance
4. Set color

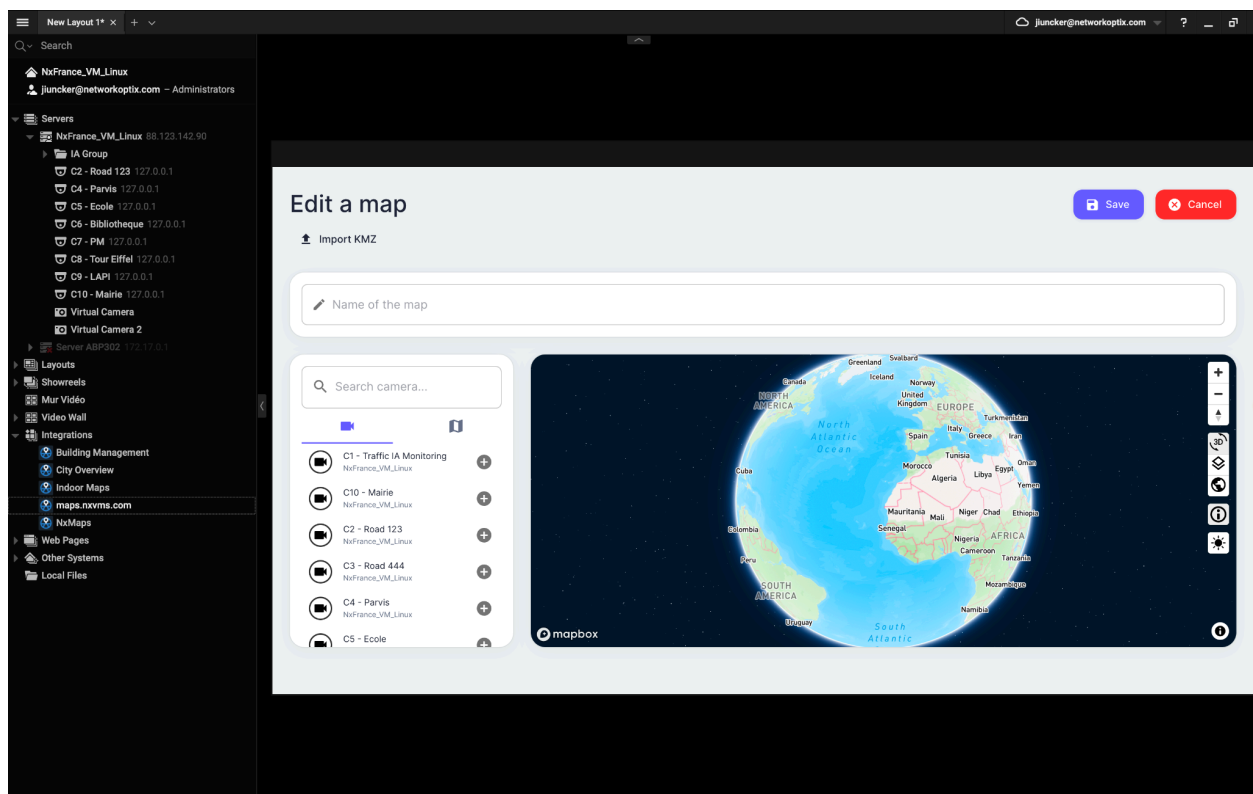


Network Optix

975 Ygnacio Valley Rd.
Walnut Creek, CA 94596
NetworkOptix.com

Create a Maps from Map data

Step 1 - Select your system location

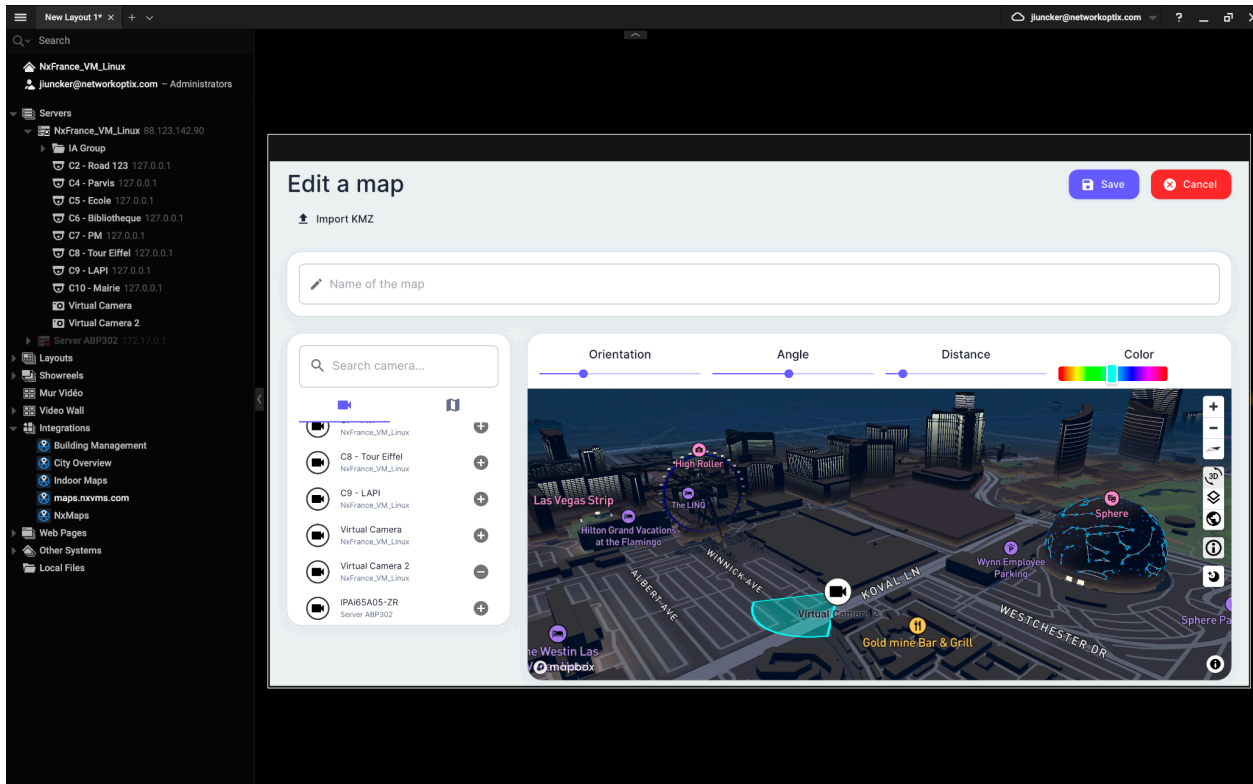


1. Select your system location
2. Select view mode (2D/3D/Satellite) - **The selected view mode will be used by default**
3. Select default orientation by dragging your mouse



NetworkOptix
975 Ygnacio Valley Rd.
Walnut Creek, CA 94596
NetworkOptix.com

Step 2 - Setup your map



Once the position, orientation and viewing mode have been defined

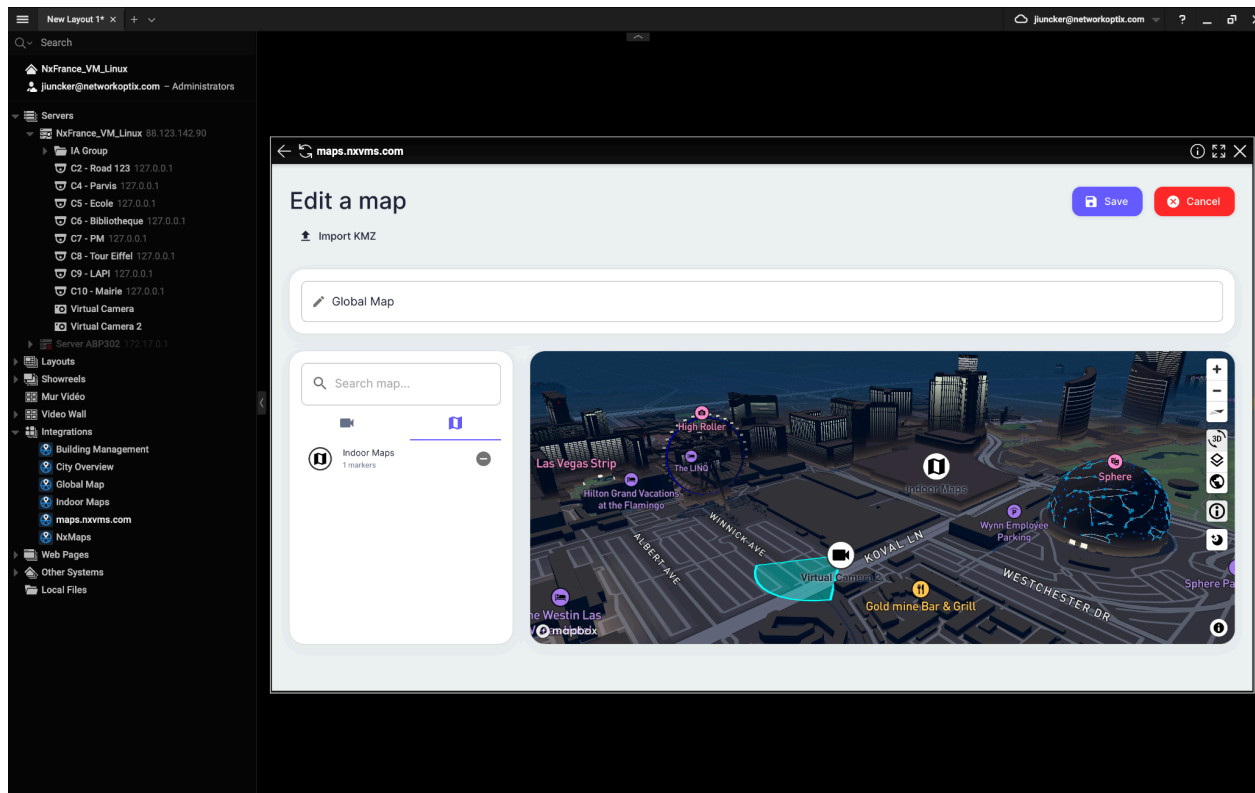
1. Click on the + to activate a camera
2. Move camera to desired location
3. Set the camera field of view
4. Set the Name of the map
5. Click on Save



Network Optix
975 Ygnacio Valley Rd.
Walnut Creek, CA 94596
NetworkOptix.com

Setup Multi-level

Step 1 - Go to sub-map tab



1. Click on the + button to activate the sub-map
2. Drag the icon to the desired location.

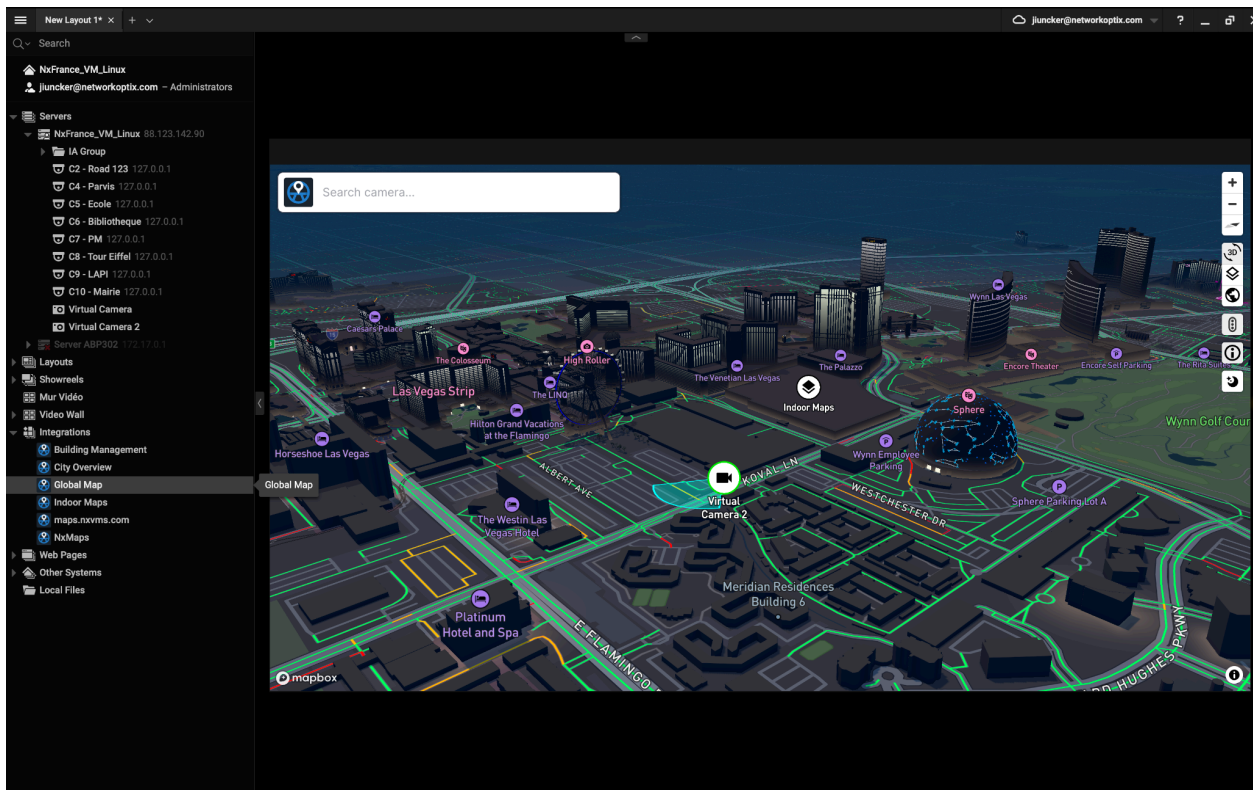


Network Optix

975 Ygnacio Valley Rd.
Walnut Creek, CA 94596
NetworkOptix.com

How to use NxMap in NxClient

Step 1 - Open a map



1. Expand the Integrations resource in the resources menu
2. Double-click, or drag and drop Global Map (or your chosen maps name) integration from the resources panel.
3. You can now start using maps



Network Optix

975 Ygnacio Valley Rd.
Walnut Creek, CA 94596
NetworkOptix.com

Step 1 - Open a device



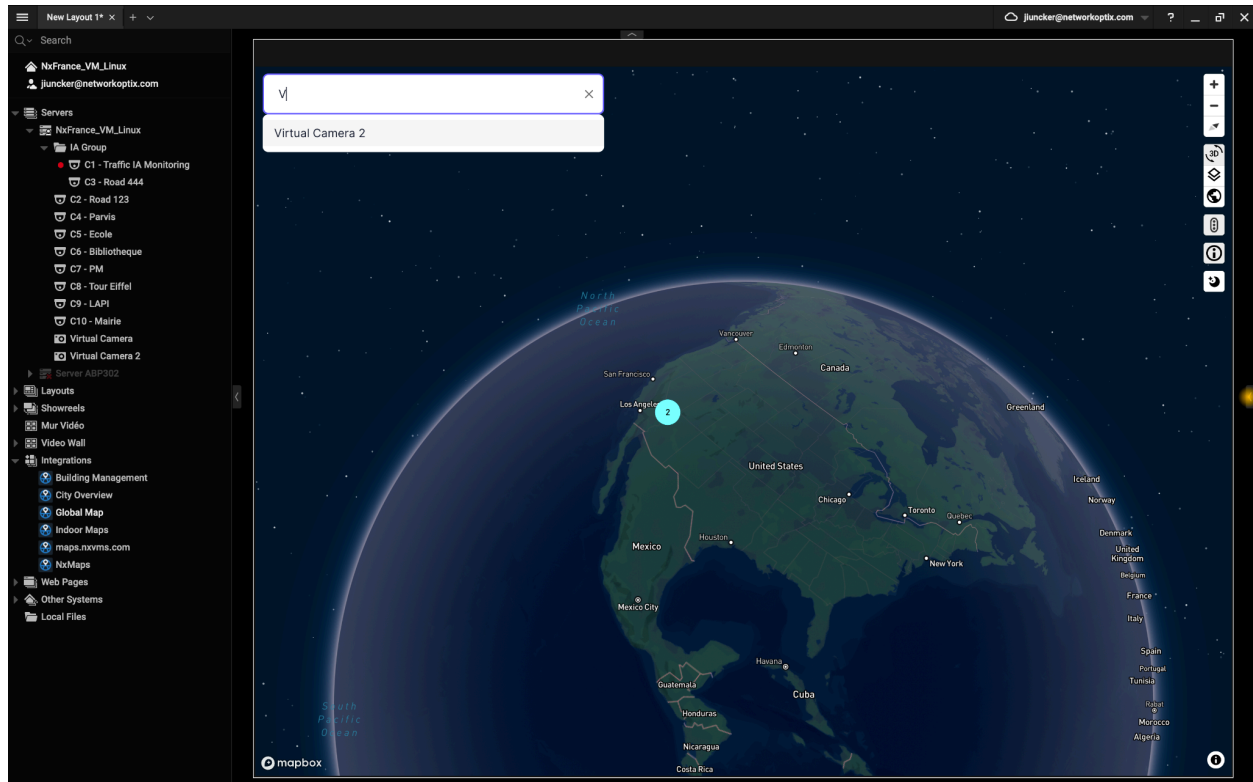
1. Double-click on a marker to open the device in NxClient
2. By placing the cursor over a marker, you can also preview the thumbnail.



Network Optix

975 Ygnacio Valley Rd.
Walnut Creek, CA 94596
NetworkOptix.com

Step 2 - Search a device



There are several ways to search for a camera:

1. By moving around the map with a simple click and drag
2. Search for a camera by name
3. Search for a camera by its Logical ID