



Nx Witness™

Gen 6 Enterprise

Nx Witness™ Enterprise

Welcome to Nx Witness Gen 6 Enterprise, our most advanced release yet. This rollout marks a significant step forward in our mission to redefine video as a tool for actionable intelligence and large-scale, data-driven operations. With Gen 6 Enterprise, we are delivering a fully integrated, scalable video management solution designed to meet the demands of complex enterprise environments.

Contents:

1. Evolution of Nx Witness
2. New Features
3. Notable Improvements



Evolution of Nx Witness

Section 1



Ready For The Next Generation

As Network Optix enters the Gen 6 era, we are embracing bold, strategic changes that align with our company's evolving direction and open new market opportunities.

Our brand refresh is inspired by the core elements that define Nx Witness: the system operator, representing human intelligence overseeing video and data feeds; the individual pixels that compose video, symbolizing the precision and clarity of visual data; and the cameras, which serve as the backbone of the entire surveillance system.

By integrating these elements—operator, pixel, and camera—the new logo encapsulates the comprehensive and interconnected nature of our innovative approach to video surveillance.



Generation 6 (Gen 6) is the next iteration of the Nx software lineup. The Gen 6 release splits Nx product offerings into two streams: Professional (perpetual) and Enterprise (subscription).



Nx Witness Enterprise

Gen 6 Enterprise is Network Optix's official launch into a subscription-based (SaaS) offering, designed for large-scale intelligent video and data management. This version includes the feature set included in Gen 6 pro, with exclusive capabilities like a New Organization Layer, Nx Maps, and Nx Connect.

Nx Witness Pro

Gen 6 Pro is the latest iteration of Network Optix's perpetual offering, Nx Witness Pro VMS, designed for efficiency and optimized control in video management. This major release refines system operations and enhances workflows with features like Redesigned User Management, NVIDIA hardware decoding, and Camera Hotspots, making them more efficient, responsive, and user-friendly than ever.



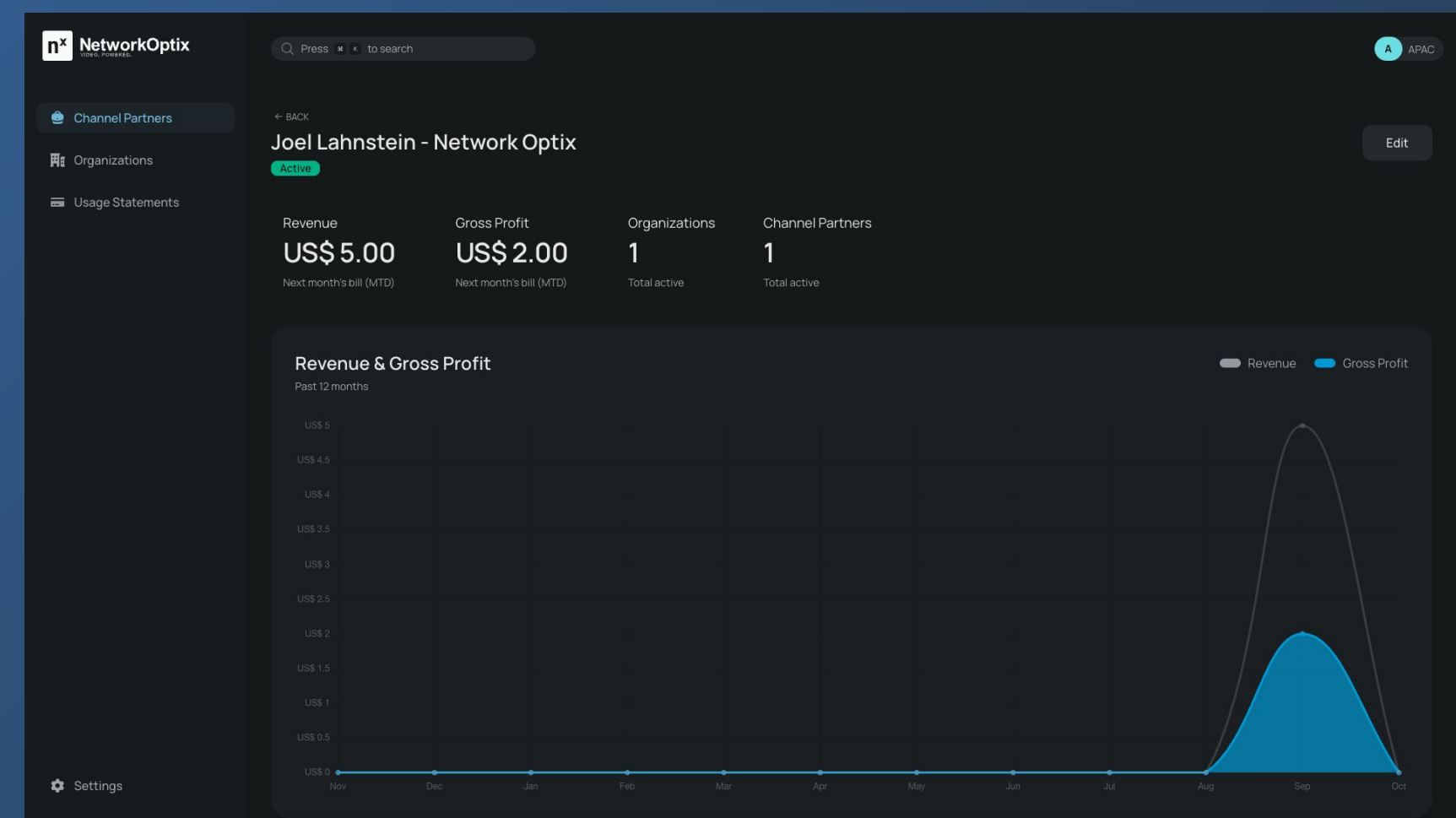
New Features

Section 2

Nx Connect.

The Nx Connect Portal is an intuitive, cloud-based platform designed to give Channel Partners full control over managing their sub-Channel Partners and Organizations. With Nx Connect, partners can efficiently oversee services (formerly licenses) and billing in one centralized system.

[Join the waitlist here.](#)



01

Comprehensive Partner
Management

02

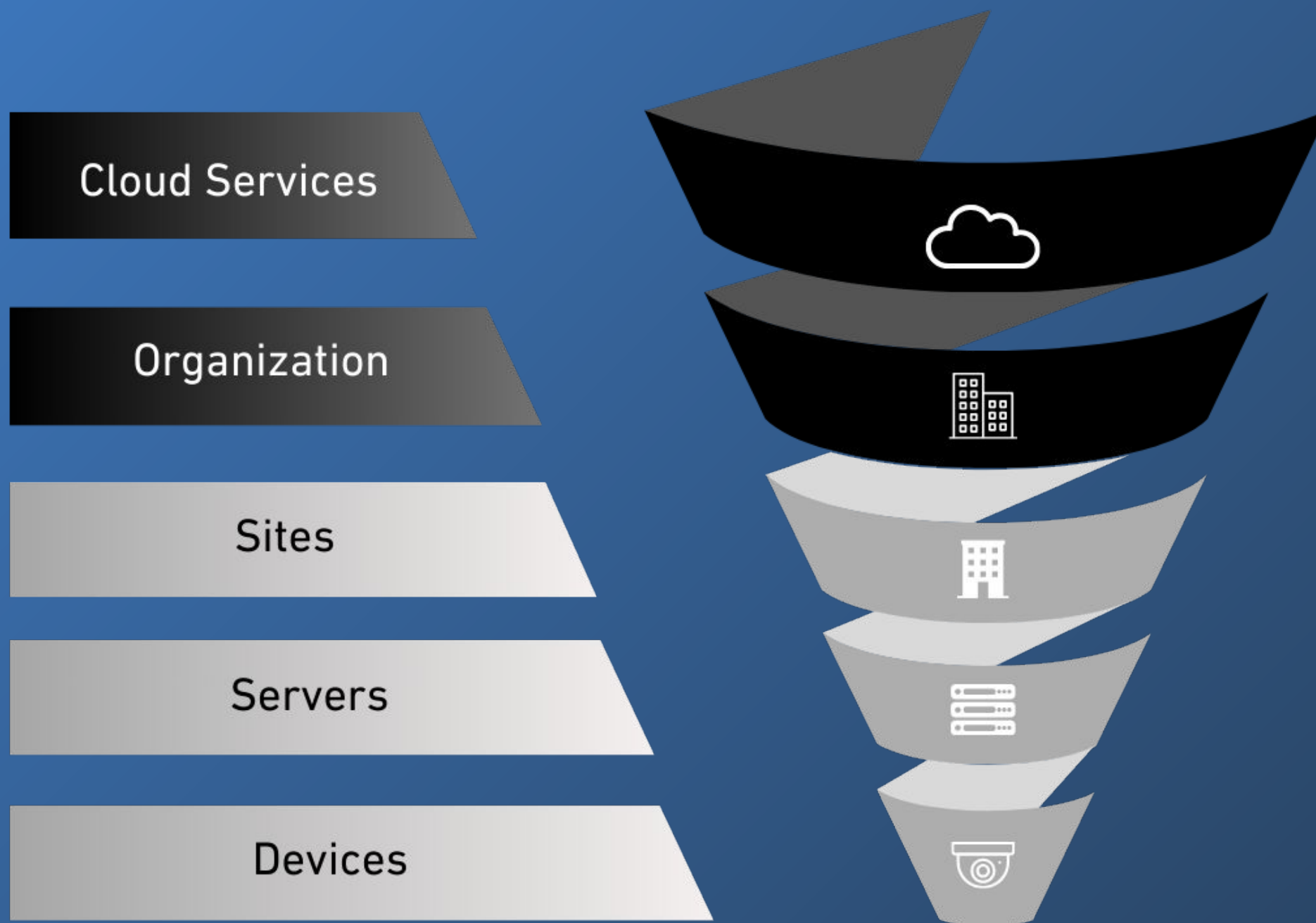
Subscription and
Services Control

03

Billing and Revenue
Insights

04

Cloud-Based Access



New Organization Tier

Nx Witness Enterprise introduces a powerful new Organizational Layer that transforms the way you manage your systems. With this new hierarchical structure, you can now oversee multiple Sites under a Unified Organization, offering better control, scalability, and streamlined management.

Unified Site Organization

Manage large-scale deployments by grouping multiple Sites under a single Organization. This structure allows you to scale infinitely while maintaining control over user permissions, system health, and archives across all Sites.

Unified Notifications

Stay informed with notifications from all Sites linked to your cloud account, accessible directly through the Nx desktop client. This ensures you're always up to date on system events across your entire network.

Nx Maps.



Intelligent GIS Mapping

Utilize smart maps with elements such as images, PDFs, and satellite maps

Streamlined User Interface

Experience a user-friendly interface that simplifies surveillance management

Real-Time Device Oversight

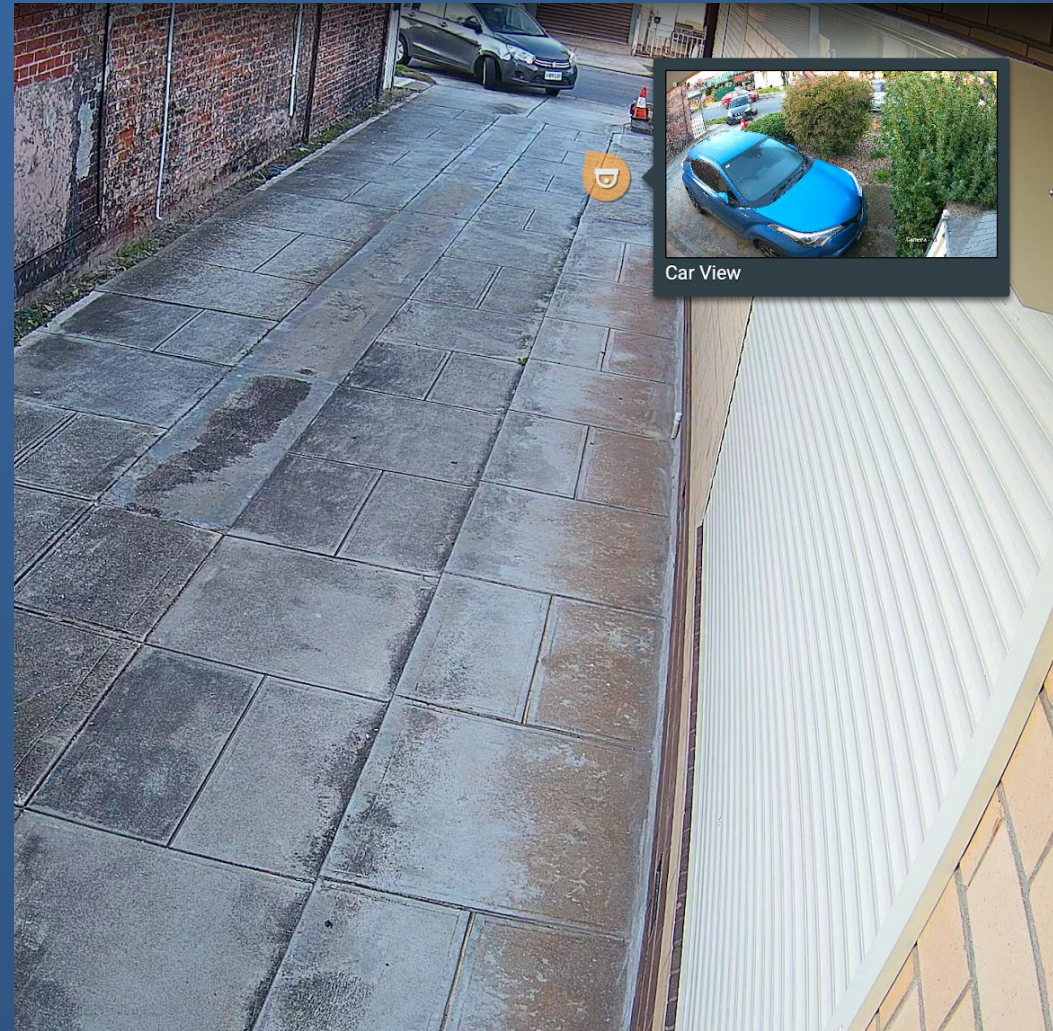
Monitor IP devices, access the latest recorded images, and check device status

Customizable Maps

Easily create and customize maps tailored to your unique needs. Define camera fields of view and assign distinct colors for clarity.

Cloud Compatibility

Adapt to local or cloud-based communication for flexible and scalable surveillance solutions.

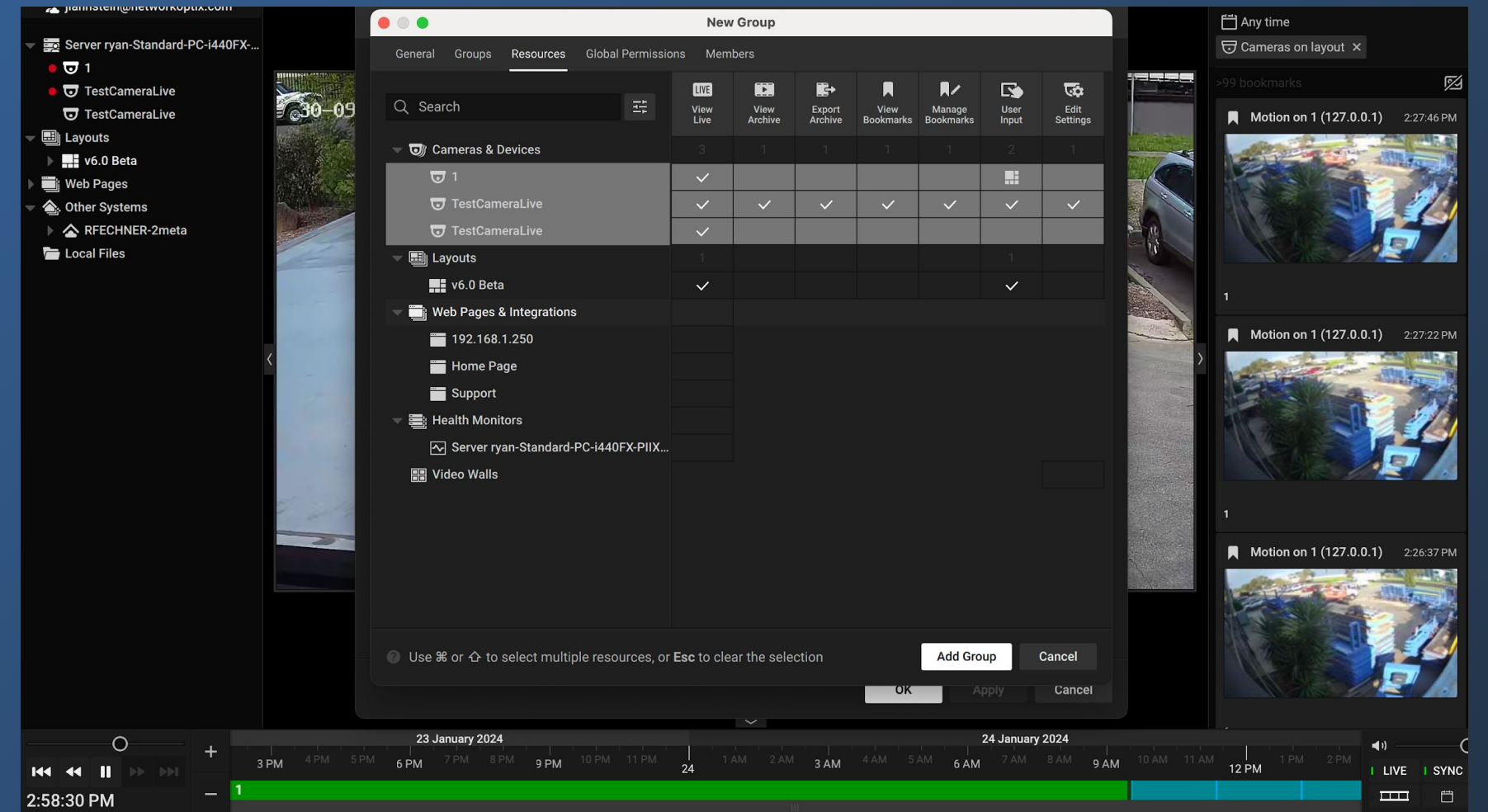


Camera Hotspots

Camera Hotspots, or "Camera Linking" expand your vision with interactive icons layered over live video feeds. With Hotspots, you can quickly view a new location without the need to open a new layout or search for a specific camera.

Improved and Redesigned User Management

With the introduction of Gen 6, administrators now have the power to craft permissions for both groups and individual users. This release also introduces the capability for users to belong to multiple groups, providing unparalleled control over user management.



01

User Role Names Updated

1. Owners are renamed to Administrators
2. Administrators are renamed to Power Users

02

Enhanced User Rights System

We've strengthened the user rights system, providing more flexibility and control over user permissions.

03

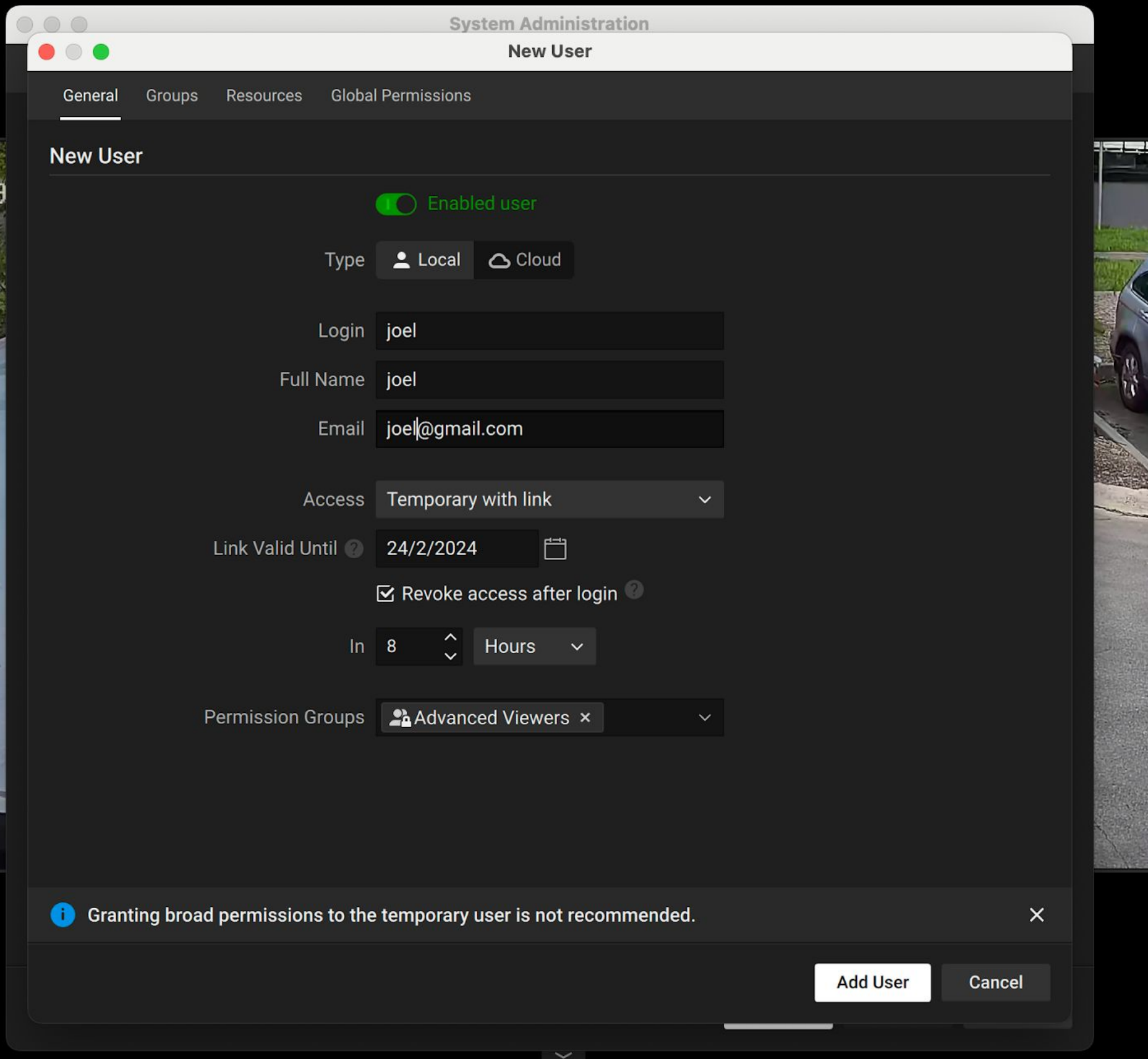
Custom Permissions for Users and Groups

You can now assign unique permissions to individual users or groups for selected cameras, offering precise access control.

04

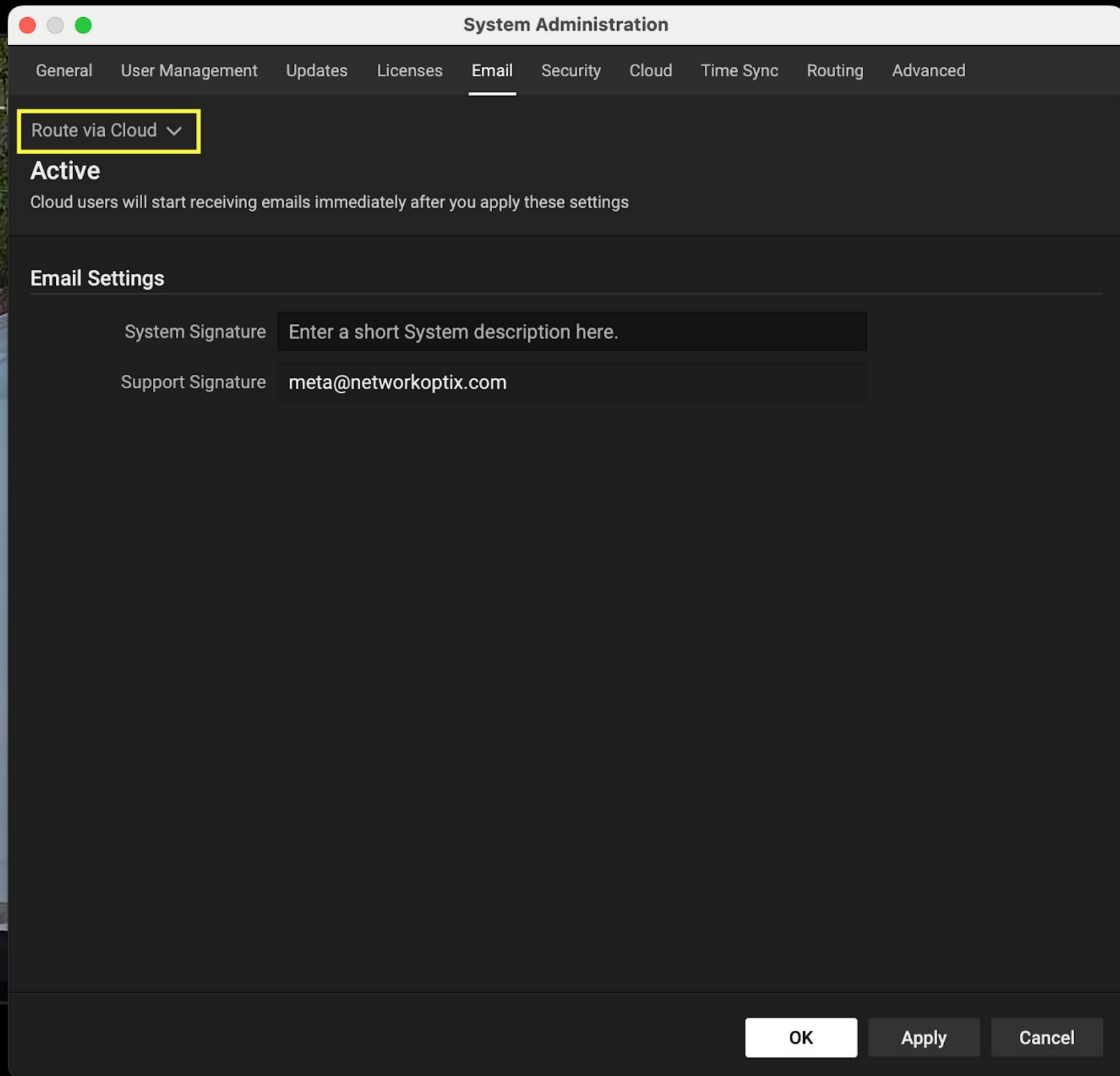
Flexible Group Membership

Users can belong to multiple permission groups, with nested groups able to inherit permissions from other groups.



Temporary User Access

Alongside your regular users, you can now effortlessly create users with time-limited access. Admins have full control, setting expiration times and link usage restrictions. Please note, this feature can only be used in the local user tab. The link provided to temporary users gives access to the Nx Desktop Client and Web Admin.



Emails via Nx Cloud

Choose to route emails through the Nx Cloud with a new option in the email settings, providing an alternative to traditional SMTP routing.



NVIDIA Hardware Video Decoding

Nx Witness can now leverage the advanced capabilities of NVIDIA GPUs to provide video decoding, ensuring your security system operates at peak efficiency.

Key Benefits

Enhanced Performance

Lower CPU Usage

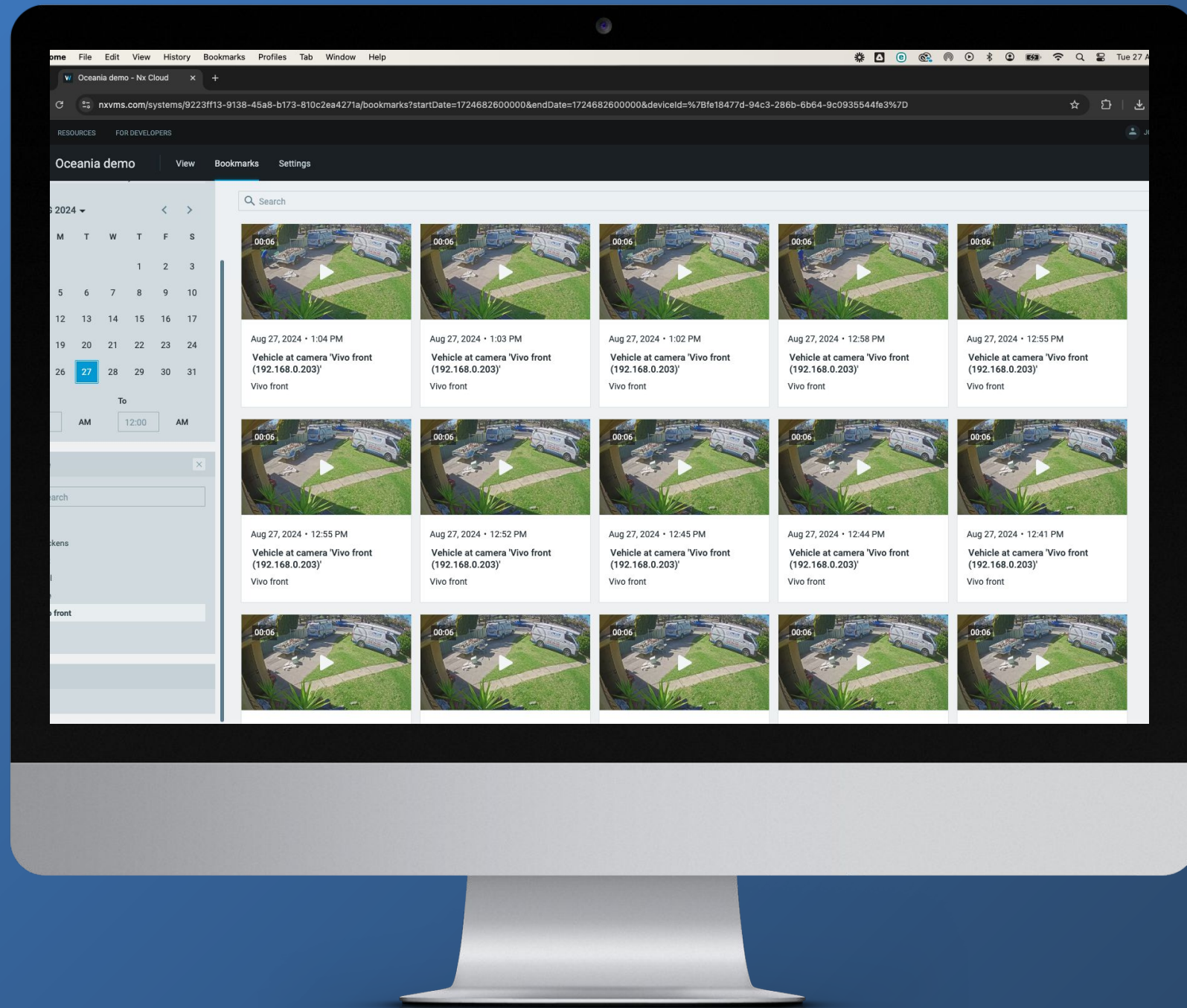
Smoother Video Playback

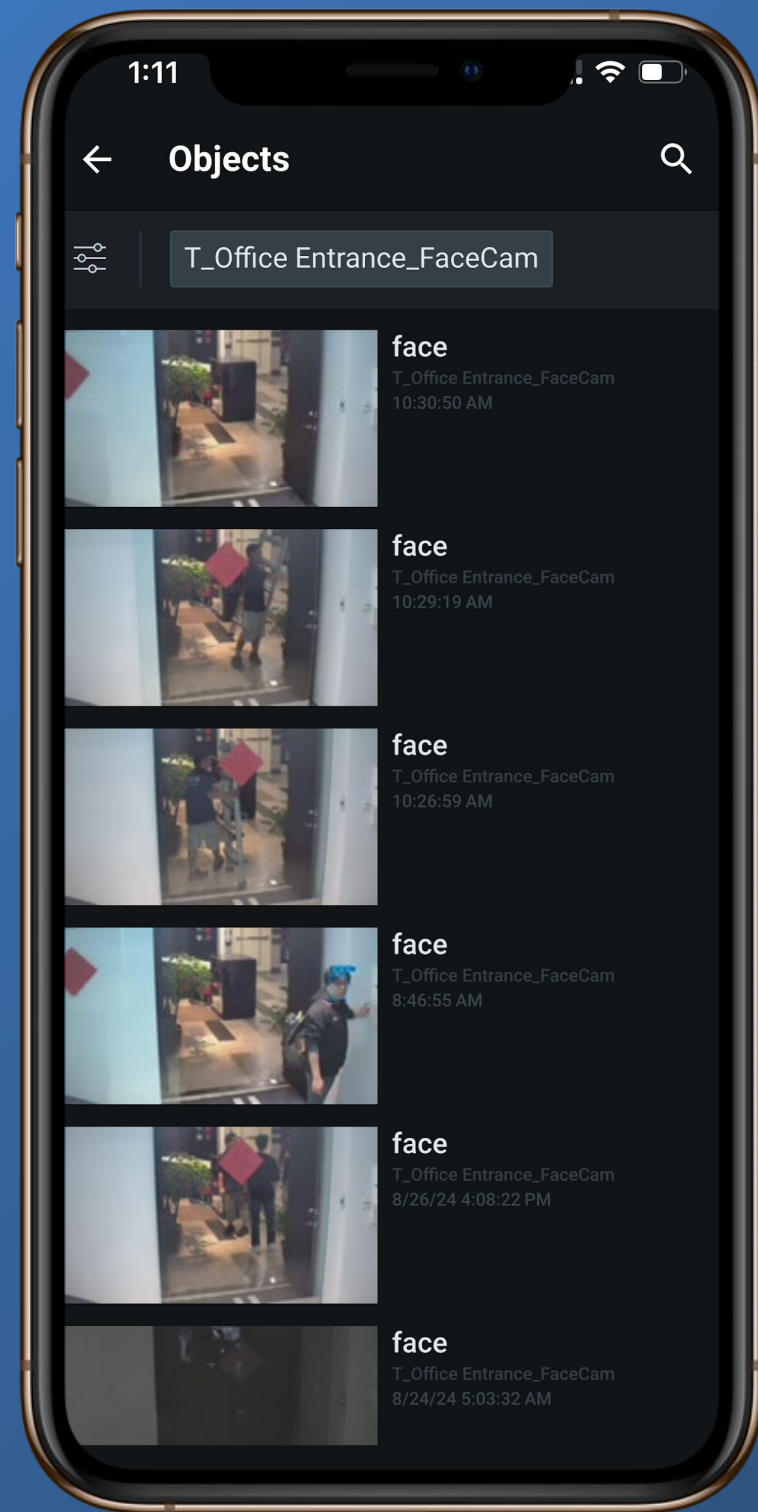
Available on Windows and Ubuntu.

Bookmarks in Nx Cloud

Bookmarks offer a simple and efficient way to capture key data and insights from your video system. With Generation 6, you can now access bookmarks directly through Nx Cloud, allowing you to retrieve important information anytime, anywhere for improved remote responsiveness and flexibility.

Coming Soon.



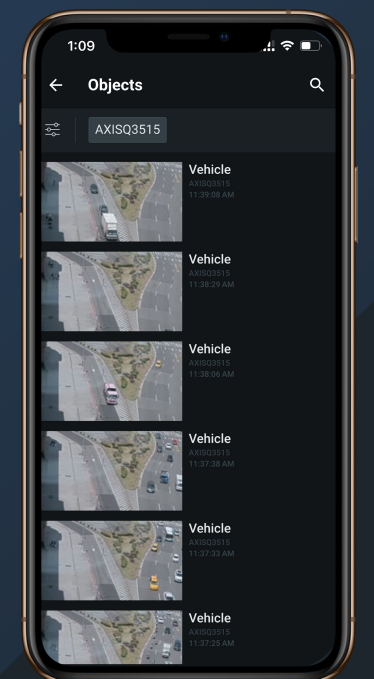


Object Search in Nx Mobile

Nx Mobile now enables advanced object searches directly within the app.

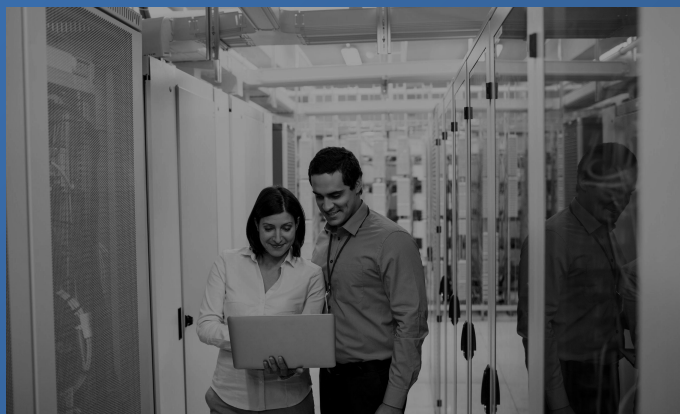
Alongside this new feature, users can continue to benefit from the powerful capabilities of live viewing, playback, calendar search, smart motion search, and bookmarks.

Available for Android & iOS



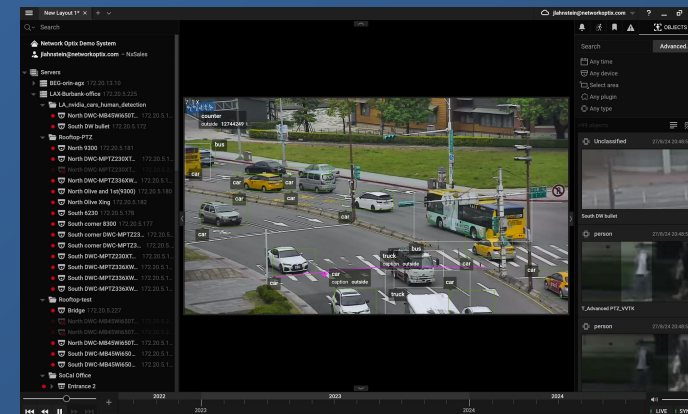
New in Gen 6.

Operational Enhancements & Improved User Experience



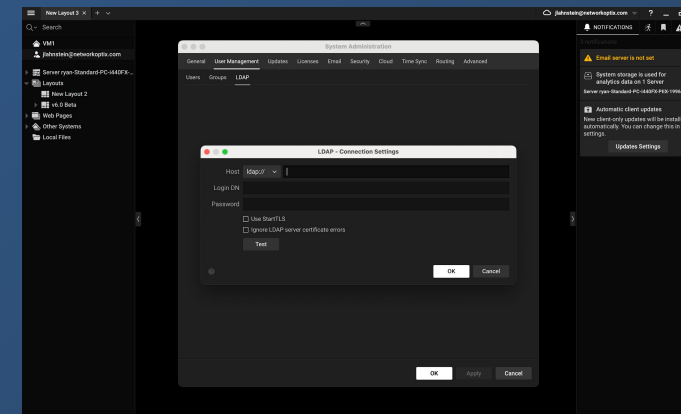
Improved Protocol

The client-server communication has been upgraded to a more robust protocol, strengthening data protection and ensuring greater security.



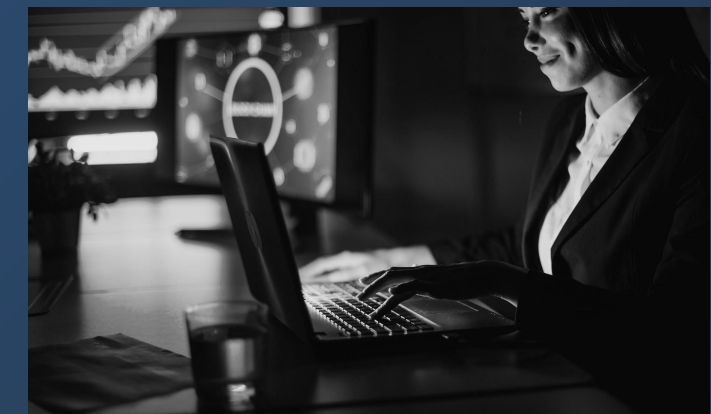
Increased Maximum Devices

Gen 6 increases the maximum devices per server from 128 cameras to 256 cameras.



Enhanced LDAP Integration

Streamline user access management with an enhanced LDAP integration, eliminating the need for manual updates.



Industry Standard Security

Network Optix is proud to be ISO 27001 compliant, meeting the highest international standards for information security. This certification highlights our dedication to safeguarding your data.

Gen 6 Improvements

Section 3

Gen 6 Improvements

NEW SUPPORTED OPERATING SYSTEMS:

- MacOS 14.0.
- Raspberry Pi OS 11 (32-bit).
- Raspberry Pi OS 12 on Raspberry Pi 3 and Raspberry Pi4 (32-bit) without support for native Raspberry cameras.

DEVICE CHANGES:

- Vivotek - Added support for new event types: Smart Tracking, Parking Detection, Restricted Zone Detection.
- Vivotek - Advanced Smart Tracking now includes zoom variables in Region of Interest settings.
- Vivotek - Exclusion Mask function added to Advanced Smart Tracking in the Desktop Client.
- Improved Hanwha Intercom Integration
- Faster Hikvision camera authorization on specific Hikvision cameras.
- Now compatible with Allnet cameras.
- Uniview Analytics Enabled

IMPROVEMENTS:

- **Streamlined Calendar Navigation:** Our new calendar offers smoother, more efficient browsing through extensive archives and timeframes.
- **Enhanced WebRTC Performance:** Significant improvements have been made to WebRTC, with detailed updates available in the upcoming API release notes.
- **Improved DST Support:** Daylight Saving Time (DST) handling has been optimized for better accuracy.
- **JWT Token Support:** Now supports JWT tokens, resolving Cloud DB performance issues and reducing logout incidents.
- **Simplified Main Menu:** Webpages and Integrations are now clearly separated in the main menu for easier access.
- **Advanced Log Management:** Desktop Client now features enhanced log configuration and extraction capabilities.
- **User Session Tracking:** New user sessions are now recorded in the Audit Trail for better monitoring.
- **Updated In-Client Browser:** The In-Client Browser (Webkit) has been upgraded for a smoother browsing experience.
- **Quick User Selection:** Double-click to quickly select the current user and system in the resource tree.
- **Customizable Web Page Titles:** Webpage titles can now be hidden within the Desktop Client for a cleaner interface.
- **Updated PTZ Control Guide:** The PTZ Control Guide in the Desktop Client now includes new functionalities, usage examples, and operational details.
- **Quick Playback Actions:** Added quick action buttons to rewind or fast forward videos by 10 seconds.
- **Enhanced Camera Dragging:** Fisheye and PTZ cameras can now be dragged easily by their title and header.
- **Faster Analytics Display:** Analytic markers (yellow) now appear on the Timeline much quicker.
- **Resilient Cloud Layouts:** Cloud Shared Layouts are now more reliable, even during network congestion or timeouts.
- **Redesigned Pause Overlay:** The pause overlay has been redesigned to allow you to view video content even when paused.



Thank You!

Visit our [YouTube](#) for feature videos.

marketing@networkoptix.com

NetworkOptix.com